

YOUR DEDICATED CONNECTION

911 INFORMATION / INDEX

© United Communications 2015



William H. Bradford – President & CEO

Business Office:

PO Box 38, Chapel Hill, TN 37034

931-364-2289 • 931-364-2227 • 1-800-779-2227

Hours: Monday-Friday 8:00am-6:00pm Customer Service & Repair

Saturday 8:00am-4:30pm Customer Service & Repair

24/7 Tech Support 1-800-779-2227 Option 3

EMERGENCY CALLS

911



FIRE



POLICE



AMBULANCE



SHERIFF

Tennessee Poison Control Center 1-800-222-1222

Before Excavating Near Buried Lines:

Dial 811
or Tennessee One-Call System .. toll-free 1-800-351-1111

State Police – Tennessee Highway Patrol

Franklin (Nashville) 615-741-2060
Lewisburg (Lawrenceburg) 931-766-1425
Murfreesboro (Nashville) 615-741-2060
Nashville 615-741-2060
Shelbyville (Lawrenceburg) 931-766-1425
Winchester (Chattanooga) 423-634-6890

Federal Bureau of Investigation (FBI)

Columbia 931-388-0398
if no answer, call Memphis 901-747-4300
Nashville 615-232-7500

Tennessee Bureau of Investigation (TBI) .. 615-744-4000

Social Security Administration 1-800-772-1213

Tennessee Regulatory Authority

Nashville toll-free 1-800-342-8359
..... long-distance 615-741-3939

<http://www.state.tn.us/tra>

Bureau of Alcohol Tobacco Firearms & Explosives

..... toll-free 1-800-800-3855

Statement of Non-Discrimination

United Communications is an equal opportunity provider and employer.

If you wish to file a Civil Rights program complaint of discrimination, complete the USDA Program Discrimination Complaint Form, found online at http://www.ascr.usda.gov/complaint_filing_cust.html, or at any USDA office, or call (866) 632-9992 to request the form. You may also write a letter containing all of the information requested in the form. Send your completed complaint form or letter to us by mail at U.S. Department of Agriculture, Director, Office of Adjudication, 1400 Independence Avenue, S.W. Washington, D.C. 20250-9410, by fax (202) 690-7442 or email at program.intake@usda.gov.

Cover designed by The Johnson Group.

| | | | |
|-------------------------------------|-----------|---|-----------|
| WHERE TO REACH US | 2 | AREA CODE MAP | 15 |
| DOING BUSINESS WITH US | 3 | AREA CODE LISTINGS | 16 |
| LOCAL CALLING | 4 | CALL FEATURES INDEX | 18 |
| CUSTOMER INFORMATION | 5 | CALL FEATURES | 19 |
| LONG DISTANCE CALLING | 9 | LONG DISTANCE | 28 |
| INTERNATIONAL CALLING | 11 | GETTING CONNECTED WITH UTC | 29 |
| EQUAL ACCESS | 14 | TENNESSEE ZIP CODES | 30 |

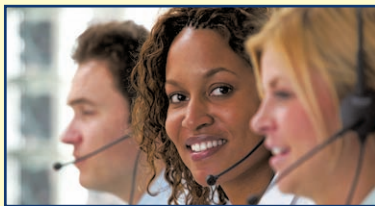
WHERE TO REACH US

Faster Speeds. Dedicated Service.

Over the last 68 years, United Communications has proven to be a pioneer in bringing telecommunications technology to our area. Today we offer High Speed Internet, Digital TV, Advance Voice Services and a continuing tradition of dedicated service.

United Communications continues its tradition of bringing you state-of-the-art technology with our fiber service. We believe we have set the pace in the telecommunications industry and now offer customers speeds up to 1 gigabyte in fiber service areas. We will continue to invest in new technology and faster speeds to better serve our customers..

24 / 7 Technical Support!



During office hours contact
Customer Service to...

- apply for new service
- change your service
- add to your existing service

CHAPEL HILL / BELFAST CUSTOMERS

Business Office: **931-364-2227**

Office Hours:

Mon. - Fri. 8:00am-6:00pm
(except holidays) • Sat. 8:00am-4:30pm

Repair Service: **931-364-2227**

Repair Hours:

Mon. 8am-4:30pm • Tues.-Fri. 8:00am-7:00pm
(except holidays) • Sat. 8:00am-4:30pm

ALL OTHER EXCHANGES (TOLL FREE)

Business Office: **1-800-779-2227**

Office Hours:

Mon. - Fri. 8:00am-6:00pm
(except holidays) • Sat. 8:00am-4:30pm

Repair Service: **1-800-779-2227**

Repair Hours:

Mon. 8am-4:30pm • Tues.-Fri. 8:00am-7:00pm
(except holidays) • Sat. 8:00am-4:30pm

Technical Support: 24 hours a day / 7 days a week — 1-800-779-2227

NOTE: When reporting telephone problems after hours, you may leave a non-urgent message or talk to an after hours operator. You will be asked to give your name, address, telephone number and nature of your problem. Reports will be obtained each workday morning. During office hours, calls will be answered by office personnel.

Pay your bill online at www.united.net 24/7.
A deposit box is located near the drive-thru window to receive payment when the office is closed.

United Communications
120 Taylor Street
PO Box 38
Chapel Hill, TN 37034
www.united.net

YOUR DEDICATED CONNECTION

DOING BUSINESS WITH US

What's the Value of Landlines?

Take a Good Look at a Few Reasons Why You Need a Landline Telephone.

- More accurate 911 services.
- Phone calls can always be traced back to a landline phone.
- Telephone access during power outage.
- No telephone access if battery dies.
- Consistent coverage - service always available.



120 Taylor Street • Chapel Hill, TN 37034



LOCAL SERVICE REPAIR

Your local communications company is responsible for the maintenance of the facilities used in connection with your local exchange service.

These facilities include call switching equipment and the cable and wires between the central call switching office and the customer's premise.

TELEPHONE SET REPAIR

Your communications company is responsible for the maintenance of any telephone and equipment for which a current maintenance contract is in effect. Telephone sets and other apparatus which are customer owned or not covered by a maintenance contract are the responsibility of the customer.

MAINTENANCE SERVICE CHARGE

If you report a service problem which requires a visit by a service technician to your home or business and the source of the problem is traced to customer-owned telephone equipment, you will be billed a \$75.00 charge for the trip to your premise. This charge will NOT cover repair of any telephone apparatus.

TELEPHONE BILLS ARE RENDERED MONTHLY

Your payment due date is at the top of your bill. Your payment is considered past due if not paid by that date.

If your payments are not received by the due date, or you do not meet your mutually agreed upon payment arrangements, your telephone service may be disconnected and you will be charged an \$17.50 reconnect fee to restore your services.

PAYMENT OF BILLS

1: Online Billpay - With Online Billpay, you can manage your account in a way that's simple, efficient and suited to your needs! This practical service lets you receive, view and pay your monthly bills through our website – all at no charge. All you have to do to take advantage of Online Billpay is sign up on our website at www.united.net.

2: By Mail or in Person - Please return the bill stub with your payment to:

United Communications
P. O. Box 38
Chapel Hill, TN 37034

If you do not have the bill stub, write the telephone number on the check or money order. Our office is located at:

120 Taylor Street
Chapel Hill, TN 37034

A drive-thru window is open for your convenience during business hours. An outside deposit box is provided for use after hours and on weekends.

3: Credit Card Payments - For your convenience, United Communications accepts Visa, Master Card, and Discover.

4: Automated Bank Draft - Customers can sign up for our free Automated Bank Draft Plan and United will automatically charge your bank account for the amount of the monthly bill. You'll receive a bill each month informing you that the billed amount will be paid by bank draft.

5: Banks - Payments may be made at the following locations:

- First Commerce Bank – Chapel Hill, TN
- First State Bank – Chapel Hill, TN
- First National Bank – Belfast, TN
- US Bank – College Grove, TN

UNITED COMMUNICATIONS : 2015 DIRECTORY

LOCAL CALLING

COUNTY WIDE CALLING

| If your telephone number begins with: | You can make/receive calls to/from subscribers in these areas toll free: <i>Dial just the seven or ten digit number – where applicable</i> |
|---------------------------------------|---|
| 233 | 220, 223, 274, 294, 355, 437, 459, 480, 641, 793, 847, 851, 859, 941 Murfreesboro / Nashville – All Exchanges Dial 931 + 437 + [4-digit number] Dial 931 + 294 + [4-digit number] |
| 276 | 270, 293, 359, 364, 659 |
| 294 | 233, 389, 437, 680, 684, 685, 695, 857 Dial 615 + 233 + [4-digit number] |
| 364 | 270, 276, 293, 359, 659 |
| 368 | 395, 641, 776, 799, 847, 851, 859, 941 Franklin, Nashville – All Exchanges |
| 437 | 233, 294, 389, 680, 684, 685, 695, 857 Dial 615 + 233 + [4-digit number] |
| 649 | 256, 448, 469, 598, 962, 967, 968 |
| 695 | 294, 389, 437, 684, 685, 857 |
| 776 | 368, 395, 799, 847, 851, 859 Franklin, Lavergne / Nashville – All Exchanges |
| 941 | 223, 233, 237, 274, 287, 325, 355, 368, 382, 384, 395, 443, 444, 449, 451, 452, 459, 480, 641, 643, 654, 672, 696, 746, 754, 758, 773, 792, 793, 799, 847, 851, 859, 952 Franklin, Hendersonville, Murfreesboro / Nashville – All Exchanges |

| Area Code 931 Exchanges | Area Code 615 / 629 Exchanges |
|-------------------------|-------------------------------|
| 276 | 233 |
| 294 | 368 |
| 364 | 776 |
| 437 | 941 |
| 649 | |
| 695 | |

ADDITIONAL CALLING WITHOUT CHARGE:

DIAL 1 + AREA CODE + THE SEVEN DIGIT NUMBER

Tennessee residents may call toll free within their county. To call other residents of your county not listed in the local calling area plan above, dial 1 + Area Code + [7-digit number].

PAY PHONES

Pay Phones are excluded from County Wide Calling.

YOUR DEDICATED CONNECTION
CUSTOMER INFORMATION



DIRECTORY ASSISTANCE

LONG DISTANCE CALLS SEE PAGE 10

LOCAL CALLING AREAS DIAL 1-615 OR 931-555-1212 (OR STATE AREA CODE)

LOCAL AND NATIONAL DIRECTORY ASSISTANCE 1-411

NOTE: Local numbers – \$2.29 Charge

NOTE: Nationwide numbers – Charges apply for numbers outside of Tennessee

800, 844, 855, 866, 877 AND 888 NUMBERS 1-800-555-1212



LONG DISTANCE

**FOSTERVILLE, UNIONVILLE, ESTILL SPRINGS,
 NOLENSVILLE, CHAPEL HILL, COLLEGE GROVE,
 FLAT CREEK, BELFAST. SEE D.D.D. INSTRUCTION PAGE 9**

**PERSON-TO-PERSON, COLLECT CALLS FROM PAY PHONES
 FOR DIALING ZERO PLUS. SEE PAGE 10**



LONG DISTANCE RATES

**CONTACT YOUR LONG-DISTANCE CARRIER FOR DISCOUNT
 PERIODS AND SPECIAL CALLING PLANS.**



TENNESSEE REGULATORY AUTHORITY

NASHVILLE LOCAL NUMBER 615-741-3939

NASHVILLE TOLL-FREE NUMBER 1-800-342-8359

<http://www.state.tn.us/tra>

CUSTOMER INFORMATION

SERVICE CONNECTION CHARGES

Service Connection charges as filed with the Tennessee Regulatory Authority will be quoted by contacting the United Business Office.

MOVING OF TELEPHONE

Subscribers wishing their services moved from one location to another should give notice to the Business Office as far in advance of the desired date of the change as possible.

United will, subject to the usual charges, change the location provided it has facilities available, at as early a date as scheduling and conditions allow.

CONSTRUCTION AND INSTALLATION CHARGES

The charges and regulations specified in the General Exchange Tariff apply in connection with all classes of service, equipment or facilities. Customer premise equipment will be installed on a non-regulated basis.

When a specified type of construction is desired by a subscriber, as for example, when underground service connections are desired in places where aerial drop wires are regularly used to reach subscriber's premises or where the individual requirements of subscribers make the installation unusually expensive, the subscriber is required to bear the cost of such special construction or installation.

SERVICE MAINTENANCE PLAN - WHOLE HOME

Service Maintenance Plan is offered for just \$4.95 per month. Customers can purchase a maintenance plan that covers repairs and replacement of inside wiring and modem repair. Malicious damage, improper installation and customer-owned telephone equipment are not covered under the Service Maintenance Plan.

TELEPHONE DIRECTORIES

One telephone directory is furnished without charge for each customer access line and/or each telephone instrument maintenance plan from the telephone company. Additional directories can be obtained from our business office.

DIRECTORY ACCURACY

The directory company makes every effort to ensure the accuracy of all listings in the telephone directory. If your listing is incorrect in any way, please call the Business Office so future directories may be corrected. Your service representative will be happy to help. Neither United Communications nor the directory company will assume liability for errors or omissions which occur in either the white or yellow pages of the directory.

OBSCENE AND HARASSING PHONE CALLS

Federal and State laws prohibit individuals from making obscene calls or those which harass or threaten another person. Severe fines and terms of imprisonment may be applicable to those convicted for violations of these laws.

HOW TO HANDLE OBSCENE OR HARASSING CALLS

If you receive obscene, harassing or threatening calls, follow these suggestions:

- 1: **Hang up** at the first obscene word or if the caller doesn't say anything the second time you say "Hello."
- 2: **Give no information** such as name and address until the caller has been identified.
- 3: **Advise your children** to give no information to strangers or let them know they are alone. Teach your children to say, "Mom or dad can't come to the phone. May I take a message?"
- 4: **If calls persist**, you should report it to your local law enforcement agency. Keep a record of the days and times of the calls, and note the caller's sex, voice, accent and comments. This information could assist the police.

ADVERTISING IN OUR DIRECTORY

The Classified Telephone Directory is published for the benefit and convenience of our subscribers. Each business subscriber is given one listing under one general classification without cost. Additional listings under other classifications may be obtained for a nominal charge by calling United Communications at 1-800-779-2227.

All subscribers (both residential and business) are listed alphabetically in the white pages of this directory. The yellow pages list only those who pay a business rate.

If you wish to advertise in the Yellow Pages or want a bold block print in the White Pages, please contact our directory publisher, Comporium Media Services, at 1-888-646-6680.

YOUR DEDICATED CONNECTION

CUSTOMER INFORMATION

NATIONAL DO-NOT-CALL REGISTRY

The National Do-Not-Call Registry is open for business, putting consumers in charge of the telemarketing calls they get at home. The Federal government created the national registry to make it easier and more efficient for you to stop getting telemarketing calls you don't want. You can register online at www.donotcall.gov or call toll-free 1-888-382-1222 (TTY 1-866-290-4236), from the number you wish to register. Registration is free.

The Federal Trade Commission, the Federal Communications Commission and the states are enforcing the National Do-Not-Call Registry. Placing your number on the registry will stop most, but not all, telemarketing calls.

TENNESSEE DO-NOT-CALL PROGRAM

Tennessee residential customers can enroll on the Tennessee Regulatory Authority (TRA) "Do Not Call Register." The register is a list of residential telephone subscribers who do not wish to be solicited by telemarketers. To enroll on the register online, go to the Tennessee Regulatory Authority's web site at <http://www.state.tn.us/tra> and click on the "Do-Not-Call" link. You may also enroll by calling toll free 1-877-872-7030 from your home. Business numbers may not be included on the list.

If you receive a telemarketing call after your name is placed on the list, violations should be reported to the TRA Consumer Services and External Affairs Division at 1-800-342-8359.

The TRA maintains the database of names, addresses and phone numbers. Once you place your name on the list, it will remain on the register until you request the TRA to remove your name or your telephone number is disconnected. If you change telephone numbers and wish to remain on the Do-Not-Call Program, it will be necessary for you to register your new telephone number in the program.

To have your telephone number(s) removed from the Do-Not-Call list, you may contact the TRA by calling 1-800-342-8359 or by writing to: Tennessee Regulatory Authority, 460 James Robertson Pkwy., Nashville, TN 37243.

DO-NOT-FAX PROGRAM

The Tennessee Do-Not-Fax Program is a consumer protection initiative passed into law by the Tennessee General Assembly and signed by Governor Phil Bredesen. Administered by the Tennessee Regulatory Authority (TRA), the program was established to provide relief to Tennessee Citizens from unwanted fax advertisements. The law requires organizations and persons, from which unsolicited faxes originate, to establish and print on each faxed page a toll-free telephone fax number that consumers may use to inform the fax sending organization by return fax of their desire to be removed from the organization's fax solicitation database. A violation occurs if the organization persists in transmitting faxes after a request has been made to stop. If you receive a fax transmission from a company that has not obtained

your permission, you may contact the TRA to file a formal complaint. The complaint forms are available on the TRA website. A copy of this form can be mailed or faxed to you by calling 1-800-342-8359, ext. 200 or 615-741-3939, ext. 200. The TRA has the authority to impose a civil penalty of up to \$2000 per occurrence to organizations that knowingly violate the law.

You do not have to sign up for this program. The law that governs this program's operation requires that companies that send fax transmissions to you obtain your permission before a fax advertisement is sent.

USE OF RESIDENCE TELEPHONE FOR BUSINESS PURPOSES

Residence telephones are installed with the understanding that they will be used for normal, social or domestic purposes. A residence telephone will be changed to a business service if used primarily or substantially for business purposes or, if the residence telephone number is advertised in connection with the sale of products or services.

TELEPHONE SAFETY

The telephone and the system serving you can generally be regarded as safe to use. There are, however, a few situations in which telephone users need to be cautious.

TEACHING YOUR CHILDREN TO DIAL IN AN EMERGENCY

Your children need to know how to use the phone in an emergency. Teach them how to dial the numbers shown on the inside front cover of this book when they need help. Also make sure they know their home telephone number and their address.

USE OF THE TELEPHONE NEAR WATER

The telephone should not be used while you are in a bathtub, shower or pool. Immersion of the telephone or handset in water could cause an electrical shock.

USE OF THE TELEPHONE DURING AN ELECTRICAL STORM

You should avoid using a telephone during an electrical storm in your immediate area. Calls of an urgent nature should be brief. Although the telephone industry uses protective devices to limit abnormal electrical surges from entering your home, absolute protection is impossible. There is always a remote risk of a dangerous electrical shock from lightning when using the telephone during a nearby electrical storm.

USE OF THE TELEPHONE TO REPORT A GAS LEAK

If you think you've found a gas leak, you should not use a telephone in the vicinity of the leak until the leak is repaired. The telephone contains electrical contacts that could generate a tiny spark when you lift the handset and dial. While unlikely, it may be possible for this spark to trigger an explosion if the gas concentration is high enough. You should go to another location to report any gas leaks.

CUSTOMER INFORMATION

TENNESSEE RELAY CENTER

The Tennessee Relay Service Center is a 24/7 center for relaying telephone calls – personal or business – to those with speech, hearing and visual impairments. Operated under contract by GoAmerica and regulated by the TRA, relay service links conversations between people who use text telephones (TTY’s) or telebraille (TB) devices and people who use standard telephones.

A person using a TTY or TB device (TTY or TB machines are optional for deaf-blind persons) types his or her conversation. The typed message is relayed by a Relay Center Specialist, called a Communications Assistant (CA) who reads the message to the person using a standard telephone. The CA communicates the hearing person’s spoken words by typing them back to the TTY user. **All calls are confidential.**

Tennessee Relay Services can be reached by simply dialing one of the following telephone numbers:

- Statewide Access: 711
- TTY/PC Users: 800-848-0298
- Voice Users: 800-848-0299
- Español: 866-503-0263
- Speech-to-Speech: 866-503-0264
- 900 Access: 900-476-2727 (TTY)
- Customer Service: 866-503-0262 (Voice, TTY, ASCII, STS)

Directory Assistance is available for relay users. Simply give the CA the area code of the person you want to call followed by 555-1212. Or call, GoAmerica Teletext Operators at 800-688-4486 and ask to be transferred.

The Tennessee Relay Center will assist in providing a connection to the emergency service needed. **However, Relay Service is not and should not be used as a substitute for 911 emergency services.** To ensure that your emergency call is handled as quickly as possible, please call your local emergency service number directly.

TELECOMMUNICATIONS DEVICE ACCESS PROGRAM

At United Communications, we want to make sure that all of our customers have the services they need to communicate easily and effectively.

The Telecommunications Devices Access Program (TDAP) is established by Chapter 417 of the Public Acts of 1999 (The “ACT”). In accordance with the Act, the program is designed to distribute appropriate telecommunications

devices so that persons who have a disability may effectively use basic telephone service. The Tennessee Regulatory Authority was given the responsibility and authority to implement and manage this program.

Devices are issued on a first-come, first-served basis. However, there are certain qualifiers that might enable individuals to receive devices on a priority basis.

To obtain an application or additional information, call the TDAP Staff at 615-741-3939 or 1-800-342-8359 ext 179 or 206. Applications may also be found on the TRA website at <http://www.state.tn.us/tra>.

LIFELINE SERVICE

United Communications offers qualified residential customers Lifeline Service. **Lifeline Service** includes a monthly discount on the local service portion of the customer’s telephone bill. Selecting the lowest cost residential service plan offered by the telephone company ensures an affordable monthly telephone bill. This program will not assist on long distance charges or special features such as Caller ID or Call Waiting.

If you think you are eligible for Lifeline Service, please call United Communications at 931-364-2227 or 1-800-779-2227 for additional information.

The qualifications for Lifeline are:

- Food Stamps (SNAP Benefits)
- Medicaid
- Supplemental Security Income (SSI)
- Temporary Assistance for Needy Families (TANF)
 - Families First
- Federal Public Housing Assistance / Section 8
- Low Income Energy Assistance Program (LIHEAP)
- National School Lunch Free Lunch Program
- Total Household Income at or below 135% of the Federal Poverty Guidelines

If you do not receive any of these public assistance programs, you may also qualify based on your total household gross monthly income.

YOUR DEDICATED CONNECTION

LONG DISTANCE CALLING

TYPES OF LONG DISTANCE CALLS

STATION TO STATION

Direct Distance Dialing (DDD) calls are station-to-station calls. Call station-to-station if you'll talk with anyone who answers. Rates are lower than for person-to-person calls and charging begins when the called telephone is answered.

PERSON TO PERSON (SEE PAGE 10 FOR ZERO-PLUS)

Call Person to Person when you wish to talk with a particular person or extension. Rates are higher than for station-to-station calls. Charging starts when conversation begins.

COLLECT (SEE PAGE 10 FOR ZERO-PLUS)

You may call collect if the person or firm you are calling agrees to pay the charges. The operator will leave the line when the person you've called accepts the charges.

CALLING CARD (SEE PAGE 10 FOR ZERO-PLUS)

A telephone calling card is a convenient way of making Long Distance calls when away from home. Customers may apply for a Calling Card by calling our business office. Some calling cards require the use of an 800 series number. Always refer to your card for specific instructions.

THIRD NUMBER

You may have long distance charges billed to an authorized third telephone number. Dial the call. When the operator comes on the line, say you would like to charge your call to a third number and give the operator that number including the area code. The operator may verify the third number charge before advancing your call.

On calls made from public telephones, someone at the third number must agree to accept the charge before the operator can complete the call. If there is no confirmation,

the operator cannot complete the call unless you make other billing arrangements: you can pay the coin rate, use your Calling Card or call collect.

CONFERENCE CALLS

You can talk with several people in different places at the same time. To obtain a number for a "Conference Call Service" provider, refer to the white page listings in this directory, or contact your long distance company. A special charge will be made for this type of call.

800 SERIES NUMBERS

Long distance calls to businesses and people with 800 series numbers are free to the caller.

MOBILE, MARINE AND OVERSEAS SERVICE (DIAL OPERATOR)

You can make local and long distance calls to automobiles, trucks, trains, aircraft and boats equipped for telephone service and to practically all the world's telephones. Some Mobile and Marine calls can be completed by dialing, the Operator must complete others.

INTERNATIONAL CALLS

You can call practically every telephone in the world from your telephone. See pages 11-13 for information.

TIME AND CHARGES

When placing a long distance call, you may ask the operator to tell you the length of time you talked and the costs associated with the call.

NOTE: Some long distance companies' procedures may differ. Check with your long distance carrier for dialing instructions.



UNITED COMMUNICATIONS : 2015 DIRECTORY

LONG DISTANCE CALLING

EXPANDED DIRECT DISTANCE INSTRUCTIONS

You Can Dial All Long Distance Calls (except coin telephones)

**Your Area Codes are
615, 629, 931**

WHEN DIALING STATION-TO-STATION CALLS...

within or outside the 615, 629 or 931 area, dial **1 + Area Code + Seven Digit Telephone Number**

WHEN DIALING PERSON-TO-PERSON, COLLECT, CALLING CARD AND BILLED TO ANOTHER NUMBER....

within or outside the 615, 629 or 931 area, dial **0 + Area Code + Seven Digit Telephone Number**. After you have dialed the number, an operator will answer and request the details necessary to complete your call. Give the operator your special instructions as follows:

- For person-to-person calls: –say “**person-to-person**” and give the name of the person you are calling
- For collect calls: –say “**collect**” and give your name
- For calling card calls: –say “**calling card call**” and give your calling card number
- For calls billed to another number: –say “**bill this call to...**” and give the area code and the number the call is to be billed to

NOTE: *if you need operator assistance on interstate or interlata calls you must dial “00”.*

DIRECTORY ASSISTANCE

Local Directory Assistance 1 + 411 or 1-800-373-3411
National Directory Assistance 1 + 411 or 1-800-373-3411
Or You May Call 1 + Area Code + 555-1212
800, 844, 855, 866, 877, and 888 Numbers 1-800-555-1212

IF YOU REACH A WRONG NUMBER

Let the operator know right away so that you won't be charged for the call. One way to avoid wrong numbers is to keep the area code and number before you as you dial.

“BUSY” SIGNALS AND “NO ANSWERS”

If you get a “busy” signal or if no one answers the telephone you are calling hang up and try the call a little later. No charge is made on uncompleted calls.

IF YOU NEED HELP

If you are cut off, encounter difficulty in hearing or experience any other trouble, contact your long distance carrier and report it to them. They will be glad to help you. Not all long distance companies will choose to offer operator services. Contact your long distance company for more information.

LOCAL ACCESS & TRANSPORT AREAS (LATAS)

LATAs are boundaries for telephone customers. A LATA (Local Access and Transport Area) is a geographic area within which the local telephone company provides local and long distance services, plus access to the telephone network.

There are four LATAs in Tennessee: Chattanooga, Knoxville, Memphis and Nashville. United Communications is in the Nashville LATA (see map.)

Other companies provide long distance service from one LATA to any other LATA. See above for information about dialing long distance calls.

Williamson County residents saw a new area code starting as of March 28th, 2015. The Tennessee Regulatory Authority has approved this overlay to meet the need for more telephone numbers. The new area code, “629” will serve the same area as the existing “615”. While customers are not required to change existing area codes, a 10-digit dialing system will be instituted. The start of permissive 10-digit dialing began on July 26, 2014 and became mandatory on Feb. 28, 2015. New telephone lines with services assigned to “629” began March 28, 2015. Any dialing equipment programmed with a seven-digit telephone number will need to be reprogrammed. Questions can be directed to your local provider at 1-800-779-2227. Or you may access the following website for more information: Tennessee Regulatory Authority at www.tn.gov/tra/dockets/1100018.htm.



YOUR DEDICATED CONNECTION

INTERNATIONAL CALLING



HOW TO MAKE INTERNATIONAL CALLS

You can direct dial an international call from most exchanges. If your exchange does not have International Direct Dial (IDD) capability, you must dial 0 for operator, and your call will be billed at the direct dial rate.

To place an international call directly, dial:

- 1: 011
- 2: Country Code
- 3: Local Number
- 4: # – If you have touch-tone telephones, this will place your call faster

Once you've dialed your international call, allow at least 45 seconds for the ringing to start.

To place an operator-assisted, person-to-person, collect, third-number billed and calling card calls, dial:

- 1: 01
- 2: Country Code
- 3: City Code
- 4: Local Number
- 5: # – If you have touch-tone telephones, this will place your call faster

Wait for a special tone and operator to answer. After dialing, allow at least 45 seconds for the ringing to start.

DIAL "00" OPERATOR IF YOU NEED ASSISTANCE:

- To obtain a telephone number you don't know.
- To obtain City Routing Codes.
- For help in completing a call.
- For credit on a call with which you had difficulty.

INTERNATIONAL COUNTRY AND CITY CODES

HOW TO USE THIS CHART:

The Country Code is the bold number to the right of the country name. City Codes are the numbers to the right of the city name. The Time Difference (TD) is the number in parenthesis following the country name. The time difference is from Central Standard Time.

For example:

France **33** (+7)
Paris **1**

* Country Code for France is 33

* City Code for Paris is 1

* Add 7 hours to the Central Standard Time (CST)

TIME ZONES

Time Zone differences, based on Central Standard Time, are shown on the following Country and City Code chart.

Calls to Canada, Puerto Rico, the U.S. Virgin Islands and most numbers in the Caribbean/Atlantic region can be dialed the same way you dial long distance calls within the United States. No international access code or country code is necessary.

UNITED COMMUNICATIONS : 2015 DIRECTORY

INTERNATIONAL CALLING

| | | |
|---|---|--|
| Algeria 213 (+6) | Alexandria 3 | Italy 39 (+7) |
| Andorra 376 (+7) | Port Said 66 | Florence 55 |
| Argentina 54 (+3) | El Salvador 503 (0) | Rome 6 |
| Buenos Aires 11 | Ethiopia 251 (+9) | Venice 41 |
| Aruba 297 (+2) | Faeroe Islands 298 (+6) | Ivory Coast 225* (+6) |
| All Points 8 | Fiji Islands 679 (+18) | Japan 81 (+15) |
| Ascension Islands 247 (+6) | Finland 358 (+8) | Tokyo 3 |
| Australia 61 (+16) | Helsinki 9 | Yokohama 45 |
| Melbourne 3 | France 33 (+7) | Jordan 962 (+7) |
| Sydney 2 | Marseille 91 | Amman 6 |
| Austria 43 (+7) | Nice 93 | Kenya 254 (+9) |
| Vienna 1 | Paris 1 | Korea, North 850 (+15) |
| Bahrain 973 (+9) | French Antilles 596 (+2) | Korea, South 82 (+15) |
| Bangladesh 880 (+12) | French Guiana 594 (+3) | Pusan 51 |
| Comilla 81 | French Polynesia 689 (-4) | Seoul 2 |
| Belgium 32 (+7) | Gabonese Republic 241 (+7) | Kuwait 965 (+9) |
| Brussels 2 | Gambia 220 (+6) | Lesotho 266 (+8) |
| Ghent (Gand) 9 | Germany 49 (+7) | Liberia 231 (+6) |
| Belize 501 (0) | Berlin 30 | Libya 218 (+7) |
| Belize City 2 | West Frankfurt 69 | Tripoli 21 |
| Benin 229 (+7) | East Frankfurt 335 | Liechtenstein 423 (+7) |
| Bolivia 591 (+2) | Munich 89 | Luxembourg 352 (+7) |
| Santa Cruz 33 | Greece 30 (+8) | Macau 853 (+2) |
| Brazil 55 (+3) | Athens 1 | Malawi 265 (+8) |
| Brasilia 61 | Greenland 299 (+3) | Domasi 531 |
| Rio De Janeiro 21 | Guadeloupe 590 (+2) | Malaysia 60 (+14) |
| Brunei 673 (+14) | Guantanamo Bay | Kuala Lumpur 3 |
| Behawan 2 | (US Naval Base), Cuba 53 (0) | Mexico 52 (0) |
| Kuala Belait 3 | All Points 99 | Acapulco 744 |
| Mumong 3 | Guatemala 502 (0) | Mexico City 5 |
| Tutong 4 | Guaatemala City 2 | Monaco 377 (+7) |
| Bulgaria 359 (+8) | Guyana 592 (+3) | Morocco 212 (+6) |
| Sofia 2 | Georgetown 2 | Agadir 88 |
| Varna 52 | Haiti 509 (+1) | Casablanca 2 |
| Cameroon 237 (+7) | Honduras 504 (0) | Namibia 264 (+7) |
| Chile 56 (+2) | Hong Kong 852 (+14) | Olympia 61 |
| Santiago 2 | Hungary 36 (+7) | Netherlands 31 (+7) |
| China 86 (+14) | Budapest 1 | Amsterdam 20 |
| Beijing (Peking) 10 | Iceland 354 (+6) | The Hague 70 |
| Shanghai 21 | India 91 (+10.5) | Netherlands Antilles 599 (+2) |
| Colombia 57 (+1) | Mumbai (Bombay) 22 | New Caledonia 687 (+17) |
| Bogota 1 | New Delhi 11 | New Zealand 64 (+18) |
| Costa Rica 506 (0) | Indonesia 62 (+13) | Auckland 9 |
| Cyprus 357 (+8) | Jakarta 21 | Wellington 4 |
| Czech Republic 420 (+6) | Iran 98 (+9.5) | Nicaragua 505 (+2) |
| Prague 2 | Tehran (Teheran) 21 | Managua 2 |
| Denmark 45 (+7) | Iraq 964 (+9) | Nigeria 234 (+7) |
| All Points 8 or 45+121 | Baghdad 1 | Lagos 1 |
| Ecuador 593 (+1) | Ireland 353 (+6) | Norway 47 (+7) |
| Cuenca 7 | Dublin 1 | Oman 968 (+10) |
| Quito 2 | Galway 91 | Pakistan 92 (+11) |
| Egypt 20 (+8) | Israel 972 (+8) | Islamabad 51 |
| | Haifa 4 | Panama 507 (+1) |
| | Jerusalem 2 | Papua New Guinea 675 (+16) |
| | Tel Aviv 3 | Paraguay 595 (+2) |

YOUR DEDICATED CONNECTION

INTERNATIONAL CALLING

| | | |
|---|---|---|
| Asuncion.....21 | Sri Lanka 94 (+11.5) | Uganda 256 (+9) |
| Peru 51 (+1) | Kandy8 | United Arab Emirates 971 (+10) |
| Arequipa54 | St. Pierre and Miguelon ... 508 (+3) | Abu Dhabi2 |
| Lima 11-18 | All Points 6 | Dubai (Dubayy)4 |
| Philippines 63 (+14) | Suriname 597 (+2.5) | Ras-Al-Khaimah..... 77 |
| Manila2 | Swaziland 268 (+8) | Sharjah.....6 |
| Poland 48 (+7) | Sweden 46 (+7) | Umm-Al-Quwain6 |
| Warsaw22 | Goteborg (Gothenburg)31 | United Kingdom 44 (+6) |
| Portugal 351 (+6) | Stockholm8 | Belfast 2890 |
| Lisbon1 | Switzerland 41 (+7) | Cardiff 2920 |
| Qatar 974 (+9) | Geneva.....22 | Glasgow.....141 |
| Romania 40 (+8) | Lucerne.....41 | London (inner) 207 |
| San Marino 378 (+7) | Zurich1 | London (outer) 208 |
| Saudi Arabia 966 (+9) | Taiwan 886 (+14) | Uruguay 598 (+3) |
| Riyadh3 | Taichung.....2 | Mercedes 532 |
| Senegal 221 (+6) | Tainan.....6 | Montevideo2 |
| Singapore 65 (+14) | Tanzania 255 (+9) | Vatican City 39 (+7) |
| Slovak Republic 421 (+7) | Thailand 66 (+13) | All Points 6 |
| South Africa 27 (+8) | Bangkok2 | Venezuela 58 (+2) |
| Cape Town.....21 | Togo 228 (+6) | Maracaibo61 |
| Pretoria12 | Tunisia 216 (+7) | Vietnam 84 (+13) |
| Spain 34 (+7) | Tunis1 | Yemen 967 (+8) |
| Barcelona.....93 | Turkey 90 (+9) | Zambia 260 (+8) |
| Madrid91 | Istanbul Avrupa (Europe) 212 | Zimbabwe 263 (+8) |
| Seville (Sevilla).....95 | Izmir232 | |



EQUAL ACCESS

CHOOSING A LONG DISTANCE COMPANY

Customers in this area have the option of selecting a “preferred” long distance company for their “1+” and “0+” calling.

New customers are given one free choice of a “preferred” long distance company. Once customers have made their choice, there is a charge for each subsequent change made in long distance carriers.

COMPANY CODE DIALING

Many long distance companies feature a variety of special rates, particularly in the areas of “distance” and “time of day”. You do not necessarily have to use the services of your preferred “1+” long distance company. Instead, you can use Company Code Dialing.

HERE'S HOW IT WORKS:

- 1: Dial 101 and the four-digit code of the long distance company you wish to use (see code listings on this page).
- 2: Then dial 1 + the area code + the phone number for a direct dialed call or 0 + the area code + the phone number for a credit card, collect or billed-to-a-third-number call.
- 3: Your call will be routed through the company you have selected.

Some of the equal access long distance companies on the following chart accept company code dialing without a previously arranged account. Some companies may require that you set up an account with them before you can use their code. This chart is based on information available at publication of this directory. Some companies may no longer offer long distance service. Others may offer service, but may not wish to be listed. Companies listed may serve some, but not all customers in this area.

INTERNATIONAL DIALING

International calls may be dialed directly from many telephone exchanges, or placed through an international operator. For instructions on placing an international call, dial 00 or use instructions provided by your international long distance company. (See pages 11-13 for more information.)

UTC INTEREXCHANGE CARRIERS AVAILABLE

COMPANY NAME CODE FOR INFORMATION

Dial the listed number(s) for more information

| | |
|---|------|
| → AT&T Communications | 0288 |
| Residence 1-800-222-0300 | |
| Business 1-800-222-0400 | |
| → Level 3 Communications | 0948 |
| Residence & Business 1-800-994-9638 | |
| → Global Crossing | 0444 |
| Residence & Business 1-800-783-2020 | |
| → Excel Telecommunications | 0752 |
| Residence & Business 1-800-875-9235 | 0811 |
| → ITC Deltacom | 0233 |
| Residence & Business 1-800-239-3000 | |
| → MCI Worldcom | 0222 |
| Residence 1-800-950-5555 | |
| Business 1-800-888-0800 | |
| → MCI Worldcom | 0555 |
| Residence 1-800-444-3333 | |
| Business 1-800-444-2222 | |
| → Qwest Communications | 0432 |
| Residence & Business 1-800-860-1020 | |
| → UTC Long Distance, LLC | 6853 |
| Residence & Business 1-888-870-5882 | |
| → XO Communications | 5119 |
| Business Only 1-888-575-6398 | |

NOTE: This list is correct as of January 5th, 2015. It does not include all long distance carriers. If you need the number for a company not listed, please call our business office at 931-364-2227 or 1-800-779-2227. A service representative will be happy to give you the number.

YOUR DEDICATED CONNECTION

EQUAL ACCESS

“SLAMMING”

WHAT IS IT? HOW TO AVOID IT?

It is important that every United Communications customer watch to make sure their monthly bill does not reflect fees erroneously charged by long-distance companies.

Reportedly, many long-distance companies are “slamming” and “cramming” customers across the country, which means customers are being charged for services they never order from companies they never selected.

SLAMMING

“Slamming” is the unauthorized switching of a person or end user’s local and/or long distance telephone service. You’ve been slammed if your local or long distance service has been changed without your knowledge or permission.

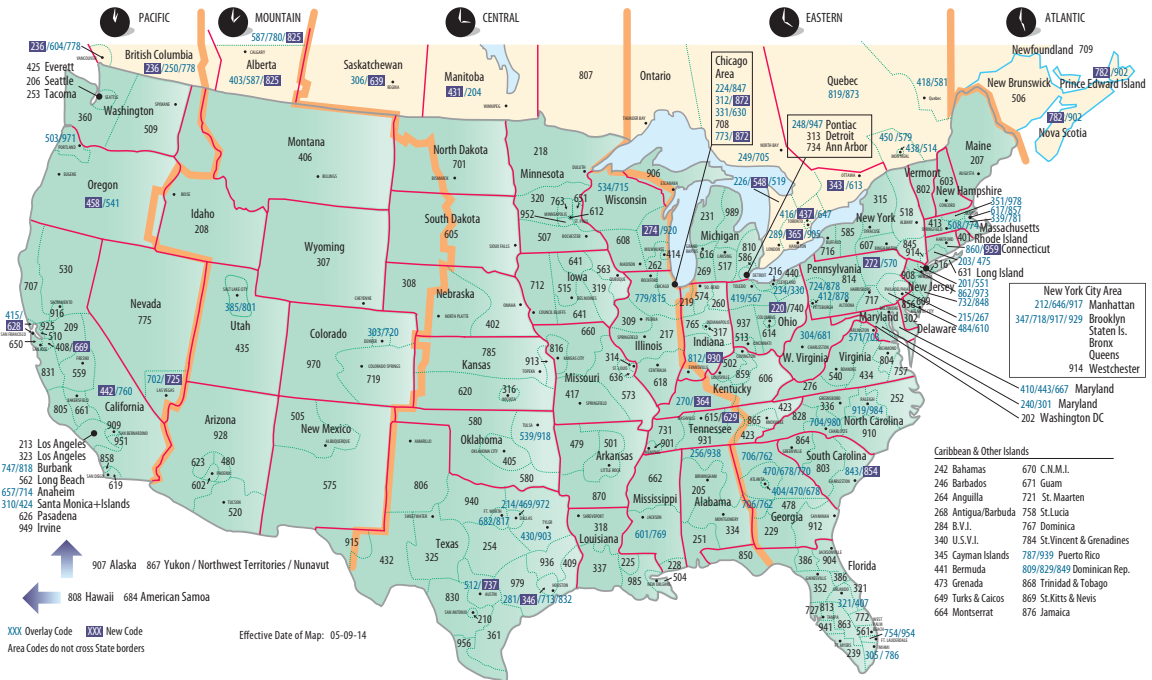
All long distance customers have the option of freezing their current carrier. This is a free service to all customers and is easy to activate. Once a customer completes a “freeze” form, long distance service cannot be changed without written consent. Persons interested in freezing long-distance service should call 931-364-2227 or 1-800-779-2227 or stop by our business office for details. To verify the name of your current long-distance carrier, call toll-free 1-700-555-4141.

TOLL DIALING PARITY

LONG DISTANCE CHOICES

For several years, United Communications customers have been able to choose the long-distance carrier that provides their long-distance service out of the region and out of state (known as InterLATA calls). Since July 22, 1999, United customers have been able to choose the long-distance carrier that provides their long-distance service within the region (known as IntraLATA calls). In the past, all IntraLATA calls were carried by BellSouth. This choice, known as Dialing Parity means that you can choose one long-distance carrier for all your long-distance calling (InterLATA and IntraLATA). You also have the option of choosing two different long-distance carriers (one for InterLATA and one for IntraLATA).

AREA CODE MAP



AREA CODE LISTINGS

ALABAMA (AL)

Anniston256/938
 Birmingham205
 Gadsden256/938
 Huntsville256/938
 Mobile251
 Montgomery334
 Tuscaloosa205

ALASKA (AK)

All Points907

ARIZONA (AZ)

Flagstaff928
 Phoenix area:
 Central Phoenix602
 Glendale, western623
 Scottsdale, eastern480
 Tucson520
 Yuma928

ARKANSAS (AR)

Ft. Smith479
 Jonesboro870
 Little Rock501
 Pine Bluff870

CALIFORNIA (CA)

Anaheim657/714
 Bakersfield661
 Chico530
 Chula Vista619
 Concord925
 Davis530
 Death Valley442/760
 Escondido442/760
 Eureka707
 Fairfield707
 Fresno559
 Irine949
 La Jolla858
 Lake Tahoe530
 Livermore925
 Los Angeles County:
 Downtown L.A213
 Burbank747/818
 Glendale747/818
 Hollywood323
 Inglewood323
 Lancaster661
 Long Beach562
 Malibu310/424
 Palmdale661
 Pasadena626
 San Fernando747/818
 San Gabriel626
 San Pedro310/424
 Santa Clarita661
 Santa Monica310
 Torrance310
 Van Nuys747/818
 Whittier562
 Marin County415/628
 Modesto209
 Monterey831
 Napa707
 Oakland510
 Oceanside442/760
 Orange Co. (north)657/714
 Orange Co. (south)949
 Palm Springs442/760
 Redding530
 Riverside909/951
 Sacramento916
 San Bernardino909/951
 San Diego619
 San Francisco415/628
 San Jose408/669
 San Luis Obispo805
 San Mateo650
 San Ramon925

Santa Barbara805
 Santa Cruz831
 Santa Rosa707
 Stockton209
 Vallejo707
 Ventura/Oxnard805
 Walnut Creek925
 Yosemite N.P.209

COLORADO (CO)

Colorado Springs719
 Denver303/720
 Ft. Collins970
 Grand Junction970
 Pueblo719

CONNECTICUT (CT)

Hartford860/959
 New Haven, southwest203/475

DELAWARE (DE)

All Points302

DIST. COLUMBIA (DC)

Washington, D.C. All Points202

FLORIDA (FL)

Bradenton941
 Brandon813
 Clearwater727
 Daytona Beach386
 Dunedin727
 Ft. Lauderdale954/754
 Ft. Myers239
 Ft. Pierce772
 Gainesville352
 Jacksonville904
 Key West305/786
 Lakeland863
 Melbourne321
 Miami/Dade Co.305/786
 Ocala352
 Okeechobee863
 Orlando407/321
 Pensacola850
 St. Petersburg727
 Sarasota941
 Tallahassee850
 Tampa813
 West Palm Beach561

GEORGIA (GA)

Adel229
 Albany229
 Americus229
 Athens706
 Atlanta404/678/470
 Augusta706
 Bainbridge229
 Blakely229
 Brunswick912
 Cairo229
 Calhoun706
 Camilla229
 Carrollton770/678/470
 Cartersville770/678/470
 Cedartown770/678/470
 Columbus706
 Cordele229
 Dalton706
 Dawson229
 Douglas912
 Dublin478
 Eastman478
 Elberton706
 Ellijay706
 Fitzgerald229
 Fort Valley478
 Gainesville770/678/470
 Griffin770/678/470
 Hardwick478
 Hinesville912

Jesup912
 La Fayette706
 La Grange706
 Macon478
 Milledgeville478
 Marietta770/678/470
 Monroe770/678/470
 Moultrie229
 Newnan770/678/470
 Peachtree City770/678/470
 Perry478
 Rome706
 Roswell770/678/470
 Sandersville478
 Savannah912
 Smyrna770/678/470
 Statesboro912
 Summerville706
 Swainsboro478
 Thomaston706/762
 Thomasville229
 Thomson706/762
 Tifton229
 Toccoa706
 Valdosta229
 Vidalia912
 Warner Robbins478
 Waycross912
 Waynesboro706/762
 Winder770/678/470

HAWAII (HI)

All Points808

IDAHO (ID)

All Points208

ILLINOIS (IL)

Aurora630
 Champaign/Urbana217
 Chicago:
 Downtown312/872
 Other areas773/872
 O'Hare/Midway773/872
 North suburbs847/224
 S./near W. subs708
 Far west subs331/630
 Chicago Heights708
 Cicero708
 East St. Louis618
 Evanston847/224
 Kankakee815/779
 Moline309
 Normal309
 Peoria309
 Rockford815/779
 Springfield217
 Waukegan847/224

INDIANA (IN)

Evansville812/930
 Ft. Wayne260
 Gary219
 Indianapolis317
 Lafayette765
 Muncie765
 South Bend574

IOWA (IA)

Ames515
 Cedar Rapids319
 Davenport563
 Des Moines515
 Dubuque563
 Ft. Dodge515
 Marshalltown641
 Mason City641
 Sioux City712

KANSAS (KS)

Hopkinsville364
 Hutchinson620

Kansas City913
 Lawrence785
 Leavenworth913
 Manhattan785
 Topeka785
 Wichita316

KENTUCKY (KY)

Bowling Green270/364
 Covington859
 Ft. Knox502
 Frankfort502
 Hopkinsville364
 Lexington859
 Louisville502
 Paducah, western270/364
 Pikeville, eastern rural606

LOUISIANA (LA)

Alexandria318
 Baton Rouge225
 Hammond985
 Houma985
 Lafayette337
 Lake Charles337
 Monroe318
 New Orleans504
 Shreveport318

MAINE (ME)

All Points207

MARYLAND (MD)

Annapolis410/443/667
 Baltimore, east410/443/667
 Frederick, west301/240
 Silver Spring301/240

MASSACHUSETTS (MA)

Boston617/857
 Cambridge617/857
 Cape Cod508/774
 Lowell, northeast978/351
 Lynn781/339
 Springfield, west413
 Weymouth781/339
 Worcester, southeast508/774

MICHIGAN (MI)

Ann Arbor734
 Detroit313
 DTW airport734
 Flint810
 Grand Rapids616
 Kalamazoo269
 Lansing517
 Muskegon231
 Pontiac248
 Saginaw989
 Sault Ste. Marie906
 Traverse City231
 Warren586

MINNESOTA (MN)

Bloomington952
 Brooklyn Park763
 Duluth218
 Minneapolis612
 Rochester507
 St. Cloud320
 St. Paul651

MISSISSIPPI (MS)

Biloxi228
 Greenville662
 Gulfport228
 Hattiesburg601/769
 Jackson601/769
 Tupelo662

YOUR DEDICATED CONNECTION

AREA CODE LISTINGS

MISSOURI (MO)

| | |
|----------------|-----|
| Cape Girardeau | 573 |
| Columbia | 573 |
| Jefferson City | 573 |
| Kansas City | 816 |
| St. Charles | 636 |
| St. Joseph | 816 |
| St. Louis | 314 |
| Sedalia | 660 |
| Springfield | 417 |

MONTANA (MT)

| | |
|------------|-----|
| All Points | 406 |
|------------|-----|

NEBRASKA (NE)

| | |
|--------------|-----|
| Lincoln | 402 |
| North Platte | 308 |
| Omaha | 402 |

NEVADA (NV)

| | |
|-----------------------|---------|
| Las Vegas metro | 702/725 |
| Reno, all other areas | 775 |

NEW HAMPSHIRE (NH)

| | |
|------------|-----|
| All Points | 603 |
|------------|-----|

NEW JERSEY (NJ)

| | |
|---------------|---------|
| Atlantic City | 609 |
| Camden | 856 |
| Cape May | 609 |
| Elizabeth | 908 |
| Hackensack | 201/551 |
| Jersey City | 201/551 |
| New Brunswick | 732/848 |
| Newark | 973/862 |
| Paterson | 973/862 |
| Princeton | 609 |
| Trenton | 609 |
| Vineland | 856 |

NEW MEXICO (NM)

| | |
|-------------|-----|
| Albuquerque | 505 |
| Roswell | 575 |

NEW YORK (NY)

| | |
|--------------------------|-----------------|
| Albany | 518 |
| Binghamton | 607 |
| Buffalo | 716 |
| Ithaca | 607 |
| Long Isl. (Nassau Co.) | 516 |
| Long Isl. (Suffolk Co.) | 631 |
| New York City: | |
| Manhattan | 212/917/646 |
| Bronx, Brooklyn, Queens, | |
| Staten Isl. | 347/718/917/929 |
| Poughkeepsie | 845 |
| Rochester | 585 |
| Syracuse | 315 |
| Utica | 315 |
| West Point | 845 |
| Westchester Co. | 914 |
| Yonkers | 914 |

NORTH CAROLINA (NC)

| | |
|---------------|---------|
| Asheboro | 336 |
| Asheville | 828 |
| Cape Hatteras | 252 |
| Chapel Hill | 919/984 |
| Charlotte | 704/980 |
| Durham | 919/984 |
| Fayetteville | 910 |
| Gastonia | 704/980 |
| Goldsboro | 919/984 |
| Greensboro | 336 |
| Greenville | 252 |
| Henderson | 252 |
| Hickory | 828 |
| High Point | 336 |
| Jacksonville | 910 |
| Kinston | 252 |
| Pinehurst | 910 |
| Raleigh | 919/984 |

| | |
|---------------|---------|
| Rocky Mount | 252 |
| Roxboro | 336 |
| Statesville | 704/980 |
| Wilmington | 910 |
| Wilson | 252 |
| Winston-Salem | 336 |

NORTH DAKOTA (ND)

| | |
|------------|-----|
| All Points | 701 |
|------------|-----|

OHIO (OH)

| | |
|------------|---------|
| Akron | 330/234 |
| Ashtabula | 440 |
| Canton | 330/234 |
| Cincinnati | 513 |
| Cleveland | 216 |
| Columbus | 614 |
| Dayton | 937 |
| Lorain | 440 |
| Mansfield | 419/567 |
| Marion | 220/740 |
| Toledo | 419/567 |
| Youngstown | 330/234 |
| Zanesville | 220/740 |

OKLAHOMA (OK)

| | |
|-------------------|---------|
| Enid | 580 |
| Guymon, Panhandle | 580 |
| Lake Texoma | 580 |
| Lawton | 580 |
| Muskogee | 539/918 |
| Oklahoma City | 405 |
| Stillwater | 405 |
| Tulsa | 539/918 |

OREGON (OR)

| | |
|-----------|---------|
| Astoria | 503 |
| Corvallis | 458/541 |
| Eugene | 458/541 |
| Medford | 458/541 |
| Pendleton | 458/541 |
| Portland | 503/971 |
| Salem | 503/971 |
| Tillamook | 503 |

PENNSYLVANIA (PA)

| | |
|---------------|---------|
| Allentown | 610/484 |
| Altoona | 814 |
| Erie | 814 |
| Harrisburg | 717 |
| Lancaster | 717 |
| New Castle | 724 |
| Uniontown | 724 |
| Philadelphia | 215/267 |
| Pittsburgh | 412 |
| Scranton | 272/570 |
| State College | 814 |
| Wilkes-Barre | 272/570 |
| Williamsport | 272/570 |

RHODE ISLAND (RI)

| | |
|------------|-----|
| All Points | 401 |
|------------|-----|

SOUTH CAROLINA (SC)

| | |
|--------------------|---------|
| Anderson | 864 |
| Charleston | 843/854 |
| Columbia | 803 |
| Florence | 843/854 |
| Greenville | 864 |
| Hilton Head Island | 843/854 |
| Rock Hill | 803 |
| Spartanburg | 864 |
| Sumter | 803 |

SOUTH DAKOTA (SD)

| | |
|------------|-----|
| All Points | 605 |
|------------|-----|

TENNESSEE (TN)

| | |
|--------------|-----|
| Chattanooga | 423 |
| Clarksville | 931 |
| Jackson | 731 |
| Johnson City | 423 |
| Kingsport | 423 |

| | |
|-----------|---------|
| Knoxville | 865 |
| Memphis | 901 |
| Nashville | 615/629 |

TEXAS (TX)

| | |
|--------------------|-----------------|
| Abilene | 325 |
| Amarillo | 806 |
| Austin | 512/737 |
| Beaumont | 409 |
| Brownsville | 956 |
| Bryan/College Sta. | 979 |
| Corpus Christi | 361 |
| Dallas | 214/972/469 |
| Del Rio | 830 |
| Denton | 940 |
| El Paso | 915 |
| Ft. Worth | 817/682 |
| Galveston | 409 |
| Houston | 346/713/281/832 |
| Huntsville | 936 |
| Kerrville | 830 |
| Laredo | 956 |
| Lubbock | 806 |
| Midland/Odessa | 432 |
| Nacogdoches | 936 |
| New Braunfels | 830 |
| San Antonio | 210 |
| Texarkana | 903/430 |
| Tyler | 903/430 |
| Victoria | 361 |
| Waco | 254 |
| Wichita Falls | 940 |

UTAH (UT)

| | |
|----------------|---------|
| Brigham City | 435 |
| Logan | 435 |
| Ogden | 385/801 |
| Provo | 385/801 |
| Salt Lake City | 385/801 |
| Tooele | 435 |
| Rural Areas | 435 |

VERMONT (VT)

| | |
|------------|-----|
| All Points | 802 |
|------------|-----|

VIRGINIA (VA)

| | |
|-----------------|---------|
| Arlington | 703/571 |
| Bristol | 276 |
| Charlottesville | 434 |
| Fredericksburg | 540 |
| Hampton | 757 |
| Lynchburg | 434 |
| Newport News | 757 |
| Norfolk | 757 |
| Petersburg | 804 |
| Portsmouth | 757 |
| Quantico | 703/571 |
| Reston | 703/571 |
| Richmond | 804 |
| Roanoke | 540 |
| Virginia Beach | 757 |
| Wash. Airports | 703/571 |

WASHINGTON (WA)

| | |
|------------|-----|
| Bellevue | 425 |
| Bellingham | 360 |
| Everett | 425 |
| Olympia | 360 |
| Redmond | 425 |
| Seattle | 206 |
| Spokane | 509 |
| Tacoma | 253 |
| Vancouver | 360 |

WEST VIRGINIA (WV)

| | |
|------------|---------|
| All Points | 304/681 |
|------------|---------|

WISCONSIN (WI)

| | |
|------------|---------|
| Eau Claire | 534/715 |
| Green Bay | 274/920 |
| La Crosse | 608 |
| Madison | 608 |

| | |
|-----------|---------|
| Milwaukee | 414 |
| Oshkosh | 274/920 |
| Racine | 262 |
| Sheboygan | 274/920 |
| Waukesha | 262 |

WYOMING (WY)

| | |
|------------|-----|
| All Points | 307 |
|------------|-----|

CANADA

| | |
|-----------------------|-------------|
| Alberta: | |
| Calgary, south | 403/587/825 |
| Edmonton, north | 587/780/825 |
| British Columbia: | |
| Vancouver metro | 236/604/778 |
| Victoria, all other | 236/250/778 |
| Manitoba | 204/431 |
| New Brunswick | 506 |
| Newfoundland | 709 |
| Nova Scotia | 782/902 |
| Nunavut | 867 |
| Northwest Terr. | 867 |
| Ontario: | |
| Kitchener | 226/519/548 |
| London | 226/519/548 |
| Mississauga | 289/365/905 |
| Niagara Falls | 289/365/905 |
| Ottawa | 343/613 |
| Peterborough | 249/705 |
| Sault Ste. Marie | 249/705 |
| Thunder Bay | 807 |
| Toronto | 416/437/647 |
| Windsor | 226/519/548 |
| Prince Edwards Island | 782/902 |
| Québec: | |
| Hull | 819/873 |
| Laval | 450/579 |
| Montréal | 514/438 |
| Québec | 418/581 |
| Sherbrooke | 819/873 |
| Saskatchewan | 306/639 |
| Yukon Territory | 867 |

CARIBBEAN / OTHER

| | |
|-------------------------|-------------|
| American Samoa | 684 |
| Anguilla | 264 |
| Antigua & Barbuda | 268 |
| Bahamas | 242 |
| Barbados | 246 |
| Bermuda | 441 |
| British Virgin Islands | 284 |
| Cayman Islands | 345 |
| C.N.M.I. (U.S. Pacific) | 670 |
| Dominica | 767 |
| Dominican Republic | 809/829/849 |
| Grenada | 473 |
| Guam (U.S. Pacific) | 671 |
| Jamaica | 876 |
| Montserrat | 664 |
| Puerto Rico (U.S.) | 787/939 |
| St. Kitts & Nevis | 869 |
| St. Lucia | 758 |
| St. Maarten | 721 |
| St. Vincent | 784 |
| Saipan (U.S. Pacific) | 670 |
| Trinidad & Tobago | 868 |
| Turks & Caicos | 649 |
| U.S. Virgin Islands | 340 |

CALL FEATURES INDEX

CALL WAITING19

CANCEL CALL WAITING19

THREE-WAY CALLING19

SPEED CALLING19

CALL RETURN19

REPEAT DIALING 20

CALL TRANSFER 20

HOME INTERCOM 20

CALL TRACE† 20

WANT YOUR CALLS TO FOLLOW YOU?21

CALL FORWARDING21

CALL FORWARDING-BUSY21

CALL FORWARDING-NO ANSWER21

CALL FORWARD-REMOTE ACCESS21

PREFERRED CALL FORWARDING22

HOT LINE22

REMOTE CALL FORWARDING22

ANSWERING THE PHONE DOESN'T HAVE TO BE LIKE SOLVING A MYSTERY.....22

DISTINCTIVE RINGING23

PRIORITY RINGING23

CALLER ID-BASIC23

CALLER ID-DELUXE.....23

CALLER ID-ENHANCED23

SELECTIVE CALL ACCEPTANCE 24

CALL SCREENING 24

CALLER ID BLOCKING 24

ANONYMOUS CALL REJECTION25

ADDITIONAL LINE25

ADDITIONAL LISTINGS.....25

NON-PUBLISHED NUMBER.....25

NON-LISTED NUMBER25

TOUCH-TONE DIALING25

INSIDE WIRE PROTECTION PLAN.....25

TOLL RESTRICTIONS25

TOLL CONTROL WITH PERSONAL IDENTIFICATION NUMBER (PIN) 26

VOICE MAIL26-27



CUSTOMIZED COMMUNICATIONS

Technology advances in the communications industry offer you a variety of choices. To assist you in reviewing these, we've put together this section outlining the many products and services we have available. Please feel free to call us with any questions you may have.

BUILD YOUR VERY OWN FEATURE PACKAGE

Many of these features can be included in package offerings. Ordering features together can save you money. It's a way for you to get our hottest features at cool savings.

NOTES:

NOTE: The "switchhook" is the button the handset pushes down when you hang up the phone. Some telephones have a Link or Flash key you can press instead.

NOTE: Features marked with a "†" will not work with calls originating from an area or long distance carrier not providing Caller ID service, toll-free numbers, 900 and 976 numbers, international calls, some cellular calls and calls from blocked numbers.

NOTE: The "" mark indicates that toll charges apply on long distance calls.*

YOUR DEDICATED CONNECTION

CALL FEATURES

CALL WAITING

Now you never have to miss another call while you're on the phone. With Call Waiting, a "beep" alerts you to another incoming call. Put the first call "on hold" while you answer the second. Easy to use and perfect for busy home or office.

How To Use Call Waiting:

- 1: A short "beep" in your earpiece while you are in the middle of a call ... means that someone else is trying to reach your number.
- 2: Ask the first caller if you may put them on hold ... then press and release the switchhook. The first caller will be put on hold and you will automatically be connected to the second caller.
- 3: Pressing and releasing the switchhook for about one second will let you alternate between parties. Each conversation is absolutely private.

CANCEL CALL WAITING

Turns off Call Waiting on a per call basis. Prevents Call Waiting tones from interrupting regular conversations, internet, computer modem or facsimile transmissions. Cancel Call Waiting is included free with Call Waiting.

Using Cancel Call Waiting Before A Call:

- 1: Press ***70** (1170 rotary).
- 2: Enter the number you wish to call.

Using Cancel Call Waiting During A Call:

Requires Three-Way Calling

- 1: Depress the switchhook for one second to place the call on hold.
- 2: Listen for dial tone, press ***70** (1170 rotary).
- 3: Listen for special beep tone, depress the switchhook for one second and return to your call.

THREE-WAY CALLING

Ideal for bringing everyone together on the same call. Three-Way calling lets you and two other parties all talk together. It works with local calls, long distance* calls or a combination of both. Three-Way Calling can be used whether you have received or have placed the first call.

To Add A Third Party To Your Call:

- 1: Press and release your telephone's switchhook to place the first caller on hold. Listen for three short beeps and the dial tone.
- 2: At dial tone, enter the number of the third party.
- 3: When the third party answers, press and hold release the telephone's switchhook to add them to your Three-Way call.

How To End Three-Way Calling:

- 1: Press and release the telephone's switchhook to disconnect the last party added. If either party hangs up, you can continue to speak to the remaining party or add another party to your call. If the party originating the Three-Way call hangs up, all parties will be disconnected.

SPEED CALLING

Tired of looking those frequently called numbers that you just can't seem to remember? Speed Calling stores the numbers you call most often, then dials them with just the push of a button or two. These numbers can be either local or long distance*. Speed Calling allows you to store 8 custom telephone numbers.

How To Program Speed Calling:

- 1: Select a [1-digit] code (numbers 2-9) for each number you wish to enter.
- 2: Press **74#** (1174 rotary).
- 3: Listen for dial tone. Enter the code you have selected and the complete telephone number (including the 1 + Area Code for long distance numbers*). Two beeps will confirm your entry. Then hang up.

How To Change A Number Stored In Memory:

- 1: Repeat steps 1, 2 and 3. Enter the code number you originally assigned for the number you want to change followed by the new number. The old numbers will be automatically replaced in the phone's memory with the new number.

How To Use Speed Calling:

- 1: Simply press the speed dial digits that correspond to the number you wish to reach. For example, **22#** (1122 rotary). Your call will be dialed automatically.

CALL RETURN

Ever experience the frustration of rushing for the phone only to find the caller has just hung up and you're left wondering who tried to reach you? Call Return solves the problem. By entering a simple code, your phone automatically calls back the last number that tried to reach you.

How To Use Call Return:

- 1: Press ***69** (1169 rotary). After you press *69, a recorded voice will give you the phone number of the call you missed and ask if you want to use the Call Return feature.*
- 2: Press **1**. Listen for ringing and wait for answer.
- 3: If you do not wish to return the call, hang up.

Note: If you were already on the phone and ignored a Call Waiting tone, press and quickly release the switchhook.

CALL FEATURES

If The Line Is Busy:

- 1: Listen for announcement telling you the line is busy.
- 2: Hang up. Your phone will keep trying the line for up to 30 minutes.
- 3: A special callback ring alerts you when the line becomes free (Some phones will ring normally).
- 4: Lift the handset to automatically place the call.

To Cancel Your Call Return Request:

- 1: Press * 8 9 (1189 rotary). Listen for the confirmation tone or announcement. Hang up.

Note: This feature works with most calls originating within the local and regional calling areas.

REPEAT DIALING

Allows your phone to keep trying a busy number up to 30 minutes. When the called party's line clears, Repeat Dialing signals you with a special ring and automatically places the call when you pick up the phone.

How To Use Repeat Dialing:

- 1: When you hear a busy signal, press and release the switchhook. Listen for a special tone. If you've already hung up, lift the handset and listen for a normal dial tone.
- 2: Press * 6 6 (1166 rotary). If the line is still busy, hang up. Your phone will check the number for up to 30 minutes.
- 3: A special callback ring alerts you if the line becomes free (Some phones will ring normally). Lift the handset to automatically place the call.*

To Cancel Your Repeat Dialing Request:

- 1: Depress the switchhook and release. Listen for a special dial tone. If you've already hung up, lift the handset and listen for a normal dial tone.
- 2: Press * 8 6 (1186 rotary). Listen for the confirmation tone or announcement. Hang up.

Notes:

- To start the 30 minute clock, repeat steps 1-3 under "How To Use...".
- You can program multiple numbers but you will not know which call is ringing you back unless you have Caller ID.
- If you cancel a Repeat Dialing request, it will cancel all the Repeat Dialing numbers programmed.
- This feature works with most calls placed within the local and regional calling areas.

CALL TRANSFER

This feature allows you to transfer a call to another line or to voice mail. You can transfer calls you originate or incoming calls.

How To Use The Call Transfer

- 1: After the calling party or called party is on the line, depress and release the switchhook, listen for the dial tone. (The present call is placed on hold).
- 2: Press the destination number to which the call is to be transferred.

- 3: When the line begins to ring, you can hang up and the other parties will be connected when the third party answers the phone, or you may press the switchhook (after the third-party answers) to allow all three parties to speak together.

Notes:

- If you want to notify the third party of the call transfer, you can keep the first party on hold until after you speak with the third party. When you hang up, both parties will be connected.
- Once you hang up, you cannot be reconnected to the call.
- Toll charges apply to calls transferred to a long distance number.

HOME INTERCOM

This feature allows you to ring all of the extensions on your line with a distinctive ring and speak with anyone that answers an extension. Home Intercom is a great feature for a shop, garage, barn or boat dock.

How To Use Home Intercom

- 1: Lift the receiver, listen for dial tone and press your own phone number.
- 2: Hang up or depress the switchhook. All extensions will ring. The ringing will stop when someone picks up one of the extensions.
- 3: Lift the receiver or release the switchhook, you will be connected to the other party.

CALL TRACE

If you're annoyed by nuisance calls, take charge! Call Trace enables you to initiate a trace on your last incoming call. Traced information will be provided to law enforcement officials if you choose to prosecute.

How To Use Call Trace:

- 1: When you get a nuisance call, press and quickly release the switchhook. Listen for a special dial tone. If you've already hung up, just lift the handset again and listen for a normal dial tone.
- 2: Press * 5 7 (1157 rotary). After you press *57, you'll hear an announcement that the call can be traced. Just follow the voice instructions to dial an additional code, and the call will be traced.
- 3: Listen for a confirmation announcement that the last call has been traced. Hang up.
- 4: The number you traced will be recorded at the phone company.

Notes:

- Call Trace must be used immediately after you hang up on the call you want traced. If you get another call, or hear a Call Waiting tone first, you will trace the wrong call.
- You must contact the business office within the next business day after completing a trace to ensure the information is kept on file.
- If you decide to follow up the matter, we'll provide that number to the local authorities.

YOUR DEDICATED CONNECTION

CALL FEATURES

WANT YOUR CALLS TO FOLLOW YOU?

Doesn't it always seem to happen. The moment you leave your home or office, that's when you get the call you've been waiting for. Now you can relax with our Call Forwarding feature options. So go ahead, enjoy coffee with your neighbor or attend that important meeting. You can have your calls follow you to another location.

CALL FORWARDING

If you know where you are going to be, you can forward your calls to any number including your wireless phone or pager, anytime you choose.

How To Use Call Forwarding:

- 1: Press *** 7 2** (1172 rotary) and listen for dial tone.
- 2: Enter the number to which your calls are to be forwarded. Call Forwarding works with either local or long distance calls.*
- 3: When someone answers, Call Forwarding is activated. If the number you called is busy, or if there is no answer, hang up and repeat the previous steps within two minutes and Call Forwarding is activated. From that moment on, all calls will go to that number until you change the number or end Call Forwarding.

How To End Call Forwarding:

- 1: Press *** 7 3** (1173 rotary) and you will hear two short "beeps". This informs you that Call Forwarding is no longer activated, and calls to your number will ring at your telephone normally.

Notes:

- While your calls are being forwarded, your telephone will ring briefly each time your number is dialed. You cannot answer the calls, but the ring is a reminder that Call Forwarding is still in effect.
- If you forward your calls outside of your local calling area, you will be charged for any calls forwarded from your number to the long distance number.
- While calls are being forwarded, you can still make outgoing calls.

CALL FORWARDING-BUSY

You can automatically forward your calls to another number when your phone line is in use. Calls can be forwarded long distance with this feature.* You can activate, deactivate and program forward-to-numbers from your phone.

How To Use Call Forwarding-Busy:

- 1: Press *** 9 0** (1190 rotary). Listen for dial tone.
- 2: Enter the number to which the calls are to be forwarded.
- 3: When someone answers, Call Forwarding-Busy is activated. If the number you called is busy, or if there is no answer, hang up and repeat the previous steps within two minutes. Wait for three beeps to confirm activation, then hang up. Call Forwarding-Busy is activated. From that moment on, all calls will go to that number until you change the number or end Call Forwarding-Busy.

To End Call Forwarding-Busy:

- 1: Press *** 9 1** (1191 rotary).
- 2: Listen for a busy signal, then hang up.

CALL FORWARDING-NO ANSWER

This feature allows you to forward your calls to another number when you are not at home or unable to answer your telephone. You may answer the call, or if unanswered after your specified number of rings, the call will forward to your forward-to number.* You can activate, deactivate and program the forward-to number from your phone.

How To Use Call Forwarding-No Answer

- 1: Press *** 9 2** (1192 rotary).
- 2: Listen for dial tone.
- 3: Enter the number to which the calls are to be forwarded. When someone answers, Call Forwarding-No Answer is activated. If the number you called is busy, or if there is no answer, hang up and repeat the previous steps within two minutes. Wait for three beeps and Call Forwarding-No Answer is activated. From that moment on, all calls will go to that number until you change the number or end Call Forwarding-No Answer.

How To End Call Forwarding-No Answer:

- 1: Press *** 9 3** (1193 rotary).
- 2: Listen for three short beeps, then hang up. Your Call Forwarding-No Answer is no longer active.

CALL FORWARD-REMOTE ACCESS

If you forget to forward your calls before leaving your home or office, no need to worry. Call Forwarding-Remote Access allows you to program your Call Forwarding feature from virtually any touch-tone phone or from your wireless phone.

How To Use Call Forward-Remote Access:

From a remote touch-tone telephone line, enter your dedicated access number provided by United Communications.

- 1: Listen for a ring and wait for instructions. Enter your [10-digit] telephone number that has the Call Forwarding feature you want to activate or deactivate.
- 2: Enter your Personal ID number.
- 3: Listen for instructions to press the Call Forwarding code number you want to activate or deactivate. Follow the instructions for that Call Forwarding feature.
For Call Forwarding, press *** 7 2** (1172 rotary).
For Call Forwarding-Busy, press *** 9 0** (1190 rotary).
For Call Forwarding-No Answer, press *** 9 2** (1192 rotary).

CALL FEATURES

To End Call Forwarding-Remote Access:

- 1: Follow steps 1-3 of "How To Use...".
- 2: Press the deactivation instruction that corresponds to the forward feature you want to deactivate.
- 3: Press *** 7 3** (1173 rotary) to end forward feature you want to deactivate.

Notes:

- A Call Forwarding feature is required (Preferred Call Forwarding will not work with this feature).
- Toll charges apply if you forward calls to a long distance number.

PREFERRED CALL FORWARDING

Preferred Call Forwarding enables you to have your most important calls follow you. You select and program the calling phone numbers you want forwarded and the destination number to which they are forwarded.* When this feature is turned "on", calls from numbers in your forward list will be routed to your "forwarded-to" number.* All others will ring at your phone as usual.

How To Use Preferred Call Forwarding:

- 1: Press *** 6 3** (1163 rotary). Listen for an announcement telling you whether the feature is currently "on" or "off". A prerecorded voice will then tell you how many (if any) numbers are currently stored in your forward list.
- 2: Follow the voice instructions and press **3** to turn the feature "on" (if it is currently "off"), or turn the feature "off" (if it is currently "on").

To Add The Last Caller To Your Forward List:

- 1: Press **0 1 #** (1201 rotary).

To Enter Your Forward-To Number:

- 1: The first time you turn on this service, you'll be asked to enter the number you'd like your special calls forwarded to. From then on, the system will simply remind you of the current "forward-to" number.
- 2: If the current number is correct, press **1**.
- 3: If you wish to change the current "forward-to" number, press **0** and then follow the voice instructions.

To Add A Number To Your List:

- 1: Press **#** (12 rotary). Follow the voice instructions. You can store up to 6 phone numbers on your forward list.

To Remove A Number From Your List:

- 1: Press ***** (11 rotary). Follow the voice instructions to remove any or all of those numbers from your list. To delete all numbers from your list, press **0 8** (1108 rotary).

To Hear The Phone Numbers On Your List:

- 1: Press **1**. After the list is read, voice instructions will follow.

To Hear Instructions Again:

- 1: Press **0**.

Notes:

- Your may press 1, 0, # or * (1, 0, 12 or 11 rotary) at any time rather than waiting for the voice instructions.
- The list you create here is separate from any other lists you may be using for Priority Ringing, Selective Call Acceptance, Call Screening and similar services.
- This service can work with Call Forwarding (all calls). Numbers on your preferred list will follow you to your Selective Call Forwarding number.* All other calls will be routed to your regular Call Forwarding number.

HOT LINE

This feature allows the phone to automatically dial a pre-programmed number* when the receiver is removed from the switchhook.

Programming is done through the local phone company.

REMOTE CALL FORWARDING

The phone company forwards all your calls to your pre-selected, permanent destination number. It's ideal for the person or business that has moved to another location. You can keep your established number while forwarding calls to your new location.*

Programming changes are made through your local phone company.

ANSWERING THE PHONE DOESN'T HAVE TO BE LIKE SOLVING A MYSTERY

Wouldn't it be nice if your telephone was able to screen your calls? Well, now it can with our advanced Call Screening options. You can **identify** who a call is for, or who is calling and selectively **block** or receive phone calls. It's like having your own receptionist – without the expense.

DISTINCTIVE RINGING

Distinctive Ringing allows you to have up to 4 numbers on a single phone line. When called, each number has its own unique ring.

Great for teenagers, roommates or home-based business (may require a business rate). Distinctive Ringing can help you create an individual identity. The unique ring can also help you identify incoming calls as to the type of call, or who it is for – before you answer. Distinctive Ringing gives you some of the benefits of additional lines at a fraction of the cost. Even works with Call Waiting (each number has a distinctive beep) and Caller ID features.

YOUR DEDICATED CONNECTION

CALL FEATURES

PRIORITY RINGING

Allows you to create a list of numbers with its own distinctive ring. The distinctive ring tells you it's one your special callers from your list. Even works with Call Waiting* (a distinctive beep lets you know it's a call from your list) and Caller ID features.

How To Use Priority Ringing:

- 1: Press * **6 1** (1161 rotary). Listen for an announcement telling you whether the feature is currently "on" or "off". A pre-recorded voice will then tell you how many (if any) numbers are currently stored in your Priority Ringing list.
- 2: Follow the voice instructions and press **3** to turn the feature "on" (if it is currently "off"), or turn the feature "off" (if it is currently "on").

To Add The Last Caller To Your List:

- 1: Press # **0 1** # (1201 rotary).

To Add A Number To Your List:

- 1: Press # (12 rotary). Then follow the voice instructions. You can store up to 10 numbers on your Priority Ringing List.

To Remove A Number From Your List:

- 1: Press * (11 rotary). Follow the voice instructions to remove any or all of the numbers from your list.

To Hear The Phone Numbers On Your List:

- 1: Press **1**. After the list is read, voice instructions will follow.

To Hear Instructions Again:

- 1: Press **0**.

CALLER ID-BASIC

This feature allows you to see the calling telephone number, giving you the option of answering or not. To use Caller ID-Basic, you need a display phone or a display "add-on" unit for your existing phone.

CALLER ID-DELUXE

Know who's calling before you answer. A special caller ID display device or display phone let's you see the calling telephone number and name of the person associated with that number in the telephone company records, giving you the option of answering or not. Caller ID-Deluxe dramatically enhances your privacy and security. To use Caller ID-Deluxe, you need a display phone or a display "add-on" unit for your existing phone that displays name and number.

How To Use Caller ID – Basic or Deluxe

- 1: When you receive a call, wait for the start of the second ring of your phone. The telephone number and/or the name of the person calling will automatically appear on your display screen.
- 2: If you choose to answer the call, the number will remain on the screen until you or the caller hangs up.

Notes:

- If "P" or "Private" appears on your screen, the caller may have blocked the display of his/her name/number. You can choose whether or not to answer the phone.
- If "Unknown Name" and/or "Unknown Number" appears, the caller is calling from an area or long distance carrier that does not provide Caller ID service.
- Not all phone companies can display the calling name.
- Most Caller ID display phones or display devices record and store the name and/or phone number of callers, even while you were out.

CALLER ID-ENHANCED

Want to know who is trying to call you even when you're already talking on your phone? A special Caller ID display device or display telephone lets you see the name and number of the person calling you when you hear the Call Waiting beep.

How To Use Caller ID-Enhanced:

- 1: When you are already on the phone and someone tries to call, the caller's name and number will appear on your display screen after the first Call Waiting beep.

Notes:

- Subscription to Caller ID-Enhanced includes the Call Waiting and Caller ID-Deluxe features.
- Subscription to Caller ID-Enhanced requires a special display phone or display device for the feature to work.
- If "P" or "Private" appears on your screen, the caller may have blocked the display of his/her name/number. You can choose whether or not to answer the call.
- If "Unknown Name" or "Unknown Number" appears, the caller is calling from an area or equipment where the information is not available.
- The caller's name will appear as the name associated with the calling number in the telephone company records.
- Most Caller ID display phones or display devices record and store the name and phone number of callers, even while you were out or on the phone.
- This service may not be available in all areas.

CALL FEATURES

SELECTIVE CALL ACCEPTANCE

Selective Call Acceptance allows you to block all calls except those from your list of special phone numbers. You can add, delete or change numbers on your list at any time. Works with local and long distance phone calls to prevent nuisance and solicitation calls. Calls from numbers not on your list are sent to an announcement that you are not receiving calls at the time and are terminated.

To Turn On Selective Call Acceptance:

- 1: Press ***64** (1164 rotary). Listen for an announcement telling you whether the feature is currently on or off. A pre-recorded voice will then tell you how many (if any) numbers are currently stored on your acceptance list.
- 2: Follow the voice instructions and press **3** to turn the feature "on" (if it is currently "off") or turn the feature "off" (if it is currently "on").

To Add The Last Caller To Your List:

- 1: Press **#01#** (1201 rotary).

To Add A Number To Your List:

- 1: Press **#** (12 rotary). Then follow the voice instructions. You can store up to 6 phone numbers on your acceptance list.

To Remove A Number From Your List:

- 1: Press ***** (11 rotary). Follow the voice instructions to remove any or all of the numbers from your list.

To Remove All Numbers From Your List:

- 1: Press ***08** (1108 rotary).

To Hear The Phone Numbers On Your List:

- 1: Press **1**. After the list is read, voice instructions will follow.

To Hear Instructions Again:

- 1: Press **0**.

Notes:

- You may press 1, 0, # or * (1, 0, 12 or 11 rotary) at any time rather than waiting for the voice instructions.
- The list you create here is separate from any other lists you may be using for Priority Ringing, Preferred Call Forwarding and similar services.

CALL SCREENING

You can program your phone to block calls from your selected list of phone numbers. Those callers receive a prerecorded announcement that you are not receiving calls at this time and are terminated. Calls from other numbers are not blocked. You can change numbers on your list at any time.

To Turn On Call Screening:

- 1: Press ***60** (1160 rotary). Listen for an announcement telling you whether the feature is currently on or off. A pre-recorded voice will then tell you how many (if any) numbers are currently stored in your screening list.

- 2: Follow the voice instructions and press **3** to turn the feature "on" (if it is currently "off") or turn the feature "off" (if it is currently "on").

To Add The Last Caller To Your List:

- 1: Press **#01#** (1201 rotary).

To Add A Number To Your List:

- 1: Press **#** (12 rotary). Then follow the voice instructions. You can store up to 10 phone numbers on your screening list.

To Remove A Number From Your List:

- 1: Press ***** (11 rotary). Follow the voice instructions to remove any or all of the numbers from your list.

To Remove All Numbers From Your List:

- 1: Press ***08** (1108 rotary).

To Hear The Phone Numbers On Your List:

- 1: Press **1**. After the list is read, voice instructions will follow.

To Hear Instructions Again:

- 1: Press **0**.

To Cancel:

- 1: Press ***80** (1180 rotary).

CALLER ID BLOCKING

Prevents your name and/or number from being shown on someone's Caller ID display. Per-Call Blocking is accomplished by entering a simple code, which prevents your name and/or number from being displayed on an individual call basis. Per-Line Blocking through the telephone company prevents calls placed from your name and/or number from being displayed.

How To Use Caller ID Blocking Per-Call:

- 1: Press ***67** (1167 rotary). Enter the number you're calling as usual.
- 2: The person you've called will not be able to see your name and/or number displayed on their screen. Instead a "P" or "Private" will be displayed. You must press *67 before each call you place. Otherwise, your name and/or phone number will be released to the person receiving the call.

How To Use Caller ID Blocking Per-Line:

If you have requested Per-Line Blocking from your telephone company, you do not need to dial a code to block your number each time. Your number will always appear as "Private".

To Turn Off Per-Line Blocking:

Allowing your number to be displayed on an individual call

- 1: Press ***82** (1182 rotary) before placing the call. Enter the number you're calling as usual.

Note:

- Caller ID Blocking will not work when calling toll-free or 900 numbers.

YOUR DEDICATED CONNECTION

CALL FEATURES

ANONYMOUS CALL REJECTION

Now you can reject all callers who have chosen to block their name and/or number from being displayed on your Caller ID device.

How To use Anonymous Call Rejection:

- 1: Press *** 7 7** (1177 rotary).
- 2: Listen for an announcement confirming that Anonymous Call Rejection is activated. Then hang up.

How To Deactivate Anonymous Call Rejection:

- 1: Press *** 8 7** (1187 rotary).
- 2: Listen for an announcement confirming that Anonymous Call Rejection has been turned off. Then hang up.

Note:

- *Callers who have blocked the display of their name and/or number will hear an announcement that you do not accept calls from private numbers and they should remove blocking and call again. All other calls will ring through as usual.*

ADDITIONAL LINE

In this hectic world, a second (or even third) telephone line may be a necessity. Use it exclusively for the children, as a dedicated fax/modem line, for online computing or as a separate home business line (may require a business rate). Installing both lines at the same time can save installation charges ... and you get a separate telephone listing for each line.

ADDITIONAL LISTINGS

Now everyone can maintain their own identity. Additional listings in the white pages of your local phone book are the most inexpensive way to help make a name for yourself. Perfect for teenagers, roommates or home-based businesses.

NON-PUBLISHED NUMBER

If you choose this service, your telephone number will not be published in the telephone directory and will not be given out through directory assistance.

NON-LISTED NUMBER

You can choose to not have your telephone number listed in the telephone directory, but it would be available through directory assistance.

TOUCH-TONE DIALING

For speed and accuracy, nothing compares to touch-tone dialing. Touch-tone speeds up voice, computer modem or fax calls – you're part of the communications revolution. It controls pagers, voice mail and answering machines. It gives you access to the growing world of automated customer services in banking, travel and more.

INSIDE WIRE PROTECTION PLAN

Protect yourself against the high cost of service calls and repair fees if trouble should occur in the wiring or telephone jacks in your home – even if they are damaged by lightning. It provides peace of mind for pennies a day.

TOLL RESTRICTIONS

900# Calls

The improper use of 900# calls can do serious damage – both financially and emotionally – especially in families with children. We can block calls to 900 toll numbers protecting your children against solicitation and you from unexpected charges. There is no charge for this service.

0+ And 1+

Cannot make long distance calls from your phone by dialing 0 or 1. Excluding 800 numbers.

International Block

Restricts calls to International numbers (some area codes are excluded).

Third Number Block

Cannot charge calls to another number.

Collect Calls

Cannot accept collect calls on your phone (applies only to calls from AT&T/BellSouth customers).

Total Block

Includes all above blocks. Excluding 800 numbers.

CALL FEATURES

TOLL CONTROL WITH PERSONAL IDENTIFICATION NUMBER (PIN)

Toll Control with PIN allows you to override toll blocks on a per call basis. Toll Control with PIN blocks all the toll calls listed under Toll Restrictions and no one can make long distance calls unless they know your PIN number. You can customize your Personal Identification Number and the changes are made through the phone company. Touch-tone service is required to operate Toll Control with PIN.

How To Use Toll Control With PIN:

- 1: Listen for the dial tone.
- 2: Enter the number you want to call.
- 3: Listen for a special dial-tone and enter your [4-digit] PIN number.
- 4: When you hang up, Toll Control with PIN will reactivate.

VOICEMAIL

CREATE YOUR VOICE MAILBOX

Setting up your voice mailbox by phone is easy, and it only takes a few minutes. Follow these simple steps:

- 1: Dial *98 (1198 rotary) from your home phone.
- 2: Enter your temporary PIN number: 1122.
- 3: Follow the prompts to set up your mailbox, and change your PIN number.

You can also access the voicemail system by dialing your 10-digit home phone number from any touch-tone phone and pressing *.

Keep in mind that when dialing into voicemail remotely, you may incur additional access charges for non-local calls, hotel services charges, or cellular charges.

SECURE YOUR VOICE MAILBOX WITH A NEW PIN NUMBER

For your security, you should immediately change your temporary PIN, even if you're not yet ready to set up your voice mailbox.

- 1: Dial *98 (1198 rotary) and enter your mailbox PIN when prompted.
- 2: Press 4 for Mailbox Setting, then 3 for Security Options.
- 3: Follow the prompts.

Your new PIN should be at least four digits.

For increased security, we recommend you do not include any part of your phone number, repeat digits (e.g. 4444) or use sequential digits (e.g. 1234).

Guard your mailbox PIN as you would your ATM PIN, and periodically change it.

RECORD GREETINGS

Personalize your voicemail by choosing from several types of mailbox greetings - Generic System Greeting, Name Announcement, Personal Greeting or Extended Absence Greeting.

You can even create a Group Greeting, when there is more than one mailbox on an account - instructing callers to leave a message in the general mailbox or an individual's sub-account mailbox.

Note:

- You must subscribe to Enhanced Voicemail to enable Group Greetings. To subscribe, call United Customer Service at 800-779-2227 and press 2 to place an order, upgrade, or make changes to existing service.

To record your name and greeting, dial *98 (1198 rotary) from your home phone, enter your PIN, then follow the prompts.

You can access the voicemail system to record greetings and reminders by dialing your home number from any touch-tone phone, pressing * and following the instructions above.

Keep in mind that when dialing into voicemail remotely, you may incur additional access charges for non-local calls, hotel services charges, or cellular charges. Greetings and reminders cannot be recorded via the web.

LISTEN TO AND MANAGE VOICEMAIL MESSAGES

From your home phone: Dial *98 (1198 rotary) from your home phone, then follow the prompts.

From a phone other than your home phone: Dial your 10-digit home phone number, press * to skip the voicemail greeting, and follow the prompts. Keep in mind that when dialing into voicemail remotely, you may incur additional access charges for non-local calls, hotel services charges, or cellular charges. You can access voicemail at: <https://commportal.united.net> with no additional charges.

Or dial the first 6 digits of your phone (area code - first three digits) + MAIL (6245), enter your 10-digit home phone number and your PIN, then follow the prompts.

YOUR DEDICATED CONNECTION

CALL FEATURES

ONLY AVAILABLE WITH ENHANCED VOICEMAIL

MANAGE YOUR VOICEMAIL VIA THE WEB AT: <https://commportal.united.net>

[Listen to voicemails](#)

[See the last ten missed, dialed and received calls](#)

[Make a contact list](#)

[Set up speed dial](#)

[Activate and deactivate Call Forwarding](#)

[Activate and deactivate Selective and Anonymous Call Rejection](#)

[Activate Call Blocking, including but not limited to 900, operator, & international calls](#)

[Change voicemail password](#)

[Forward voicemails to an email address](#)

COMMPORTAL

[Manage your United Phone service anywhere with any Internet-enabled devices.](#)

Access the CommPortal Dashboard at: <https://commportal.united.net>

Once you have entered your username and password, you can:

[Manage your voicemail messages](#)

[Search contacts](#)

[View missed calls](#)

[Modify your settings, such as password, Call Blocking and personal alerts](#)

You can also use the CommPortal tutorial by clicking the "help" option located in the upper right-hand corner of your screen.

Note:

- Only available with Enhanced Voicemail Services. To subscribe, please call our customer service at 800-779-2227 and press option 2 to speak with a customer service representative about upgrading or adding this service.



Please call our business office at 1-800-779-2227

LONG DISTANCE

LONG DISTANCE

From accessibility, responsiveness and reliability to the convenience of a single monthly bill, the local advantages of our long distance service are many. Just as we've worked to meet your expectations for quality service with United Communications, we're working to surpass those expectations with UTC Long Distance.



To get more information or subscribe —
call UTC Long Distance at

1-888-870-5882



As your total telecommunications provider, United Communications brings you long distance calling with all the advantages you've come to expect from your local service. Cutting through the confusion of the long distance service to give our customers what they really want: a company they've known and trusted for years. As a result, they know they can count on the following benefits from UTC Long Distance: quick, easy access, fast friendly attention, and clear consistent rates.

Unlimited Calling from UTC Long Distance

It's your call - choose one of our many different plans and save like never before!

Residential Unlimited Plan - \$39.95 Monthly (Residential only)

Direct dial - call anywhere in the domestic U.S. for one low, flat monthly rate.

600 Nationwide Plan - \$19.95 Monthly (Business and Residential)

Get 600 minutes of direct calling anywhere within the domestic USA, to use whenever you want. Additional minutes are just \$.09 each.

1200 Nationwide Plan - \$34.95 Monthly (Business and Residential)

Just like the 600 Minutes Nationwide Plan, but with double the talk time!

9 Cent Plan - No Monthly Plan Fee (Business and Residential)

If you just want the best rate but don't want to pay a monthly fee, the 9 Cent Plan is for you. Direct Dial - just \$.09 per minute anytime, to anywhere within the domestic USA.

YOUR DEDICATED CONNECTION

GETTING CONNECTED WITH UNITED BUNDLES

WELCOME TO UNITED.NET

If you should need technical assistance, please call 1-800-779-2227 and press "3" for Technical Support. Our technicians are specially trained to get you online and working.

If you have any questions or comments concerning your service, please call us at 1-800-779-2227.

BILLING PLANS & RATES

United.net provides several billing plan options.

| UCONNECT. Your dedicated connection. | | | |
|---|--|-------------------------------|---|
| Speed | Internet + Voice | Internet + Voice + TV | EXTRAS |
| 3 mbps Upload 768k | \$55.00 plus taxes & fees | | Whole Home DVR \$12.00 |
| | FREE INSTALLATION AND WIRELESS ROUTER | | |
| 10 mbps Upload 1 mbps | \$60.00 plus taxes & fees | \$89.95 plus taxes & fees | Upgrade to Preferred Channels for \$14.00/mo. |
| | FREE INSTALLATION AND WIRELESS ROUTER | | |
| 25 mbps Upload 3 mbps | \$65.00 plus taxes & fees | \$94.95 plus taxes & fees | HD Service Free for 2 Years! |
| | FREE INSTALLATION AND WIRELESS ROUTER | | |
| Services may vary and are not available in all areas. | | | |
| UNIFI. Nothing is Faster than Fiber! | | | |
| Speed | Internet + Voice | Internet + Voice + TV | EXTRAS |
| 100 mbps Upload 25 mbps | \$75.00 plus taxes & fees | \$99.95 plus taxes & fees | Whole Home DVR \$12.00 |
| | FREE INSTALLATION AND WIRELESS ROUTER | | |
| 250 mbps Upload 50 mbps | \$95.00 plus taxes & fees | \$114.95 plus taxes & fees | Upgrade to Preferred Channels for \$14.00/mo. |
| | FREE INSTALLATION AND WIRELESS ROUTER | | |
| 500 mbps Upload 75 mbps | \$115.00 plus taxes & fees | | HD Service Free for 2 Years! |
| | FREE INSTALLATION AND WIRELESS ROUTER | | |
| 1 GIG Upload 100 mbps | \$135.00 plus taxes & fees | \$149.95 plus taxes & fees | |
| | FREE INSTALLATION AND WIRELESS ROUTER | | |
| Services may vary and are not available in all areas. | | | |

UNITED COMMUNICATIONS : 2015 DIRECTORY

TENNESSEE ZIP CODES

| | | | | | | | | | |
|-------|------------------------------|-------|---------------------------|-------|----------------------------|-------|---------------------|----------|------------------------|
| 37995 | 1ST TENNESSEE BANK | 38008 | BOLIVAR | 38324 | CLARKSBURG | 38329 | DECATURVILLE | 38457 | FIVE POINTS |
| 37010 | ADAMS | 37025 | BON AQUA | 37040 | CLARKSVILLE | 37324 | DECHERD | 37657 | FLAG POND |
| 38310 | ADAMSVILLE | 38581 | BONE CAVE | 37041 | CLARKSVILLE | 37726 | DEER LODGE | 37096 | FLATWOODS |
| 37033 | AETNA | 38010 | BRADEN | 37042 | CLARKSVILLE | 37030 | DEFEATED | 37335 | FLINTVILLE |
| 37616 | AFTON | 38316 | BRADFORD | 37043 | CLARKSVILLE | 37727 | DEL RIO | 37058 | FORT DONELSON NATIONAL |
| 38001 | ALAMO | 37026 | BRADYVILLE | 37044 | CLARKSVILLE | 37325 | DELANO | MILITARY | |
| 37701 | ALCOA | 37024 | BRENTWOOD | 37311 | CLEVELAND | 38449 | DELLROSE | 38041 | FORT PILLOW |
| 37012 | ALEXANDRIA | 37027 | BRENTWOOD | 37312 | CLEVELAND | 38453 | DELLROSE | 37063 | FOSTERVILLE |
| 38501 | ALGOOD | 37710 | BRICEVILLE | 37320 | CLEVELAND | 38391 | DENMARK | 37938 | FOUNTAIN CITY |
| 38504 | ALLARDT | 38011 | BRIGHTON | 37323 | CLEVELAND | 37134 | DENVER | 38459 | FRANKEWING |
| 37046 | ALLISONA | 37620 | BRISTOL | 37364 | CLEVELAND | 37710 | DEVONIA | 37064 | FRANKLIN |
| 38541 | ALLONS | 37621 | BRISTOL | 38425 | CLEFTON | 37388 | DICKEL | 37065 | FRANKLIN |
| 38542 | ALLRED | 37625 | BRISTOL | 37716 | CLINTON | 37055 | DICKSON | 37067 | FRANKLIN |
| 38543 | ALPINE | 38012 | BROWNSVILLE | 37717 | CLINTON | 37056 | DICKSON | 37068 | FRANKLIN |
| 37301 | ALTAMONT | 38317 | BRUCETON | 38053 | CLOVERDALE | 37057 | DIXON SPRINGS | 37069 | FRANKLIN |
| 37115 | AM QUI | 38014 | BRUNSWICK | 37051 | COMBLRD FNRC | 38053 | DIXONVILLE | 37043 | FREDONIA |
| 37241 | AMSOUTH | 38547 | BRUSH CREEK | 37719 | COALFIELD | 37214 | DONELSON | 38034 | FRIENDSHIP |
| 37237 | AMSOUTH BANK | 38222 | BUCHANAN | 37313 | COALMONT | 37058 | DOVER | 37337 | FRIENDSVILLE |
| 37705 | ANDERSONVILLE | 38318 | BUENA VISTA | 37033 | COBLE | 37059 | DOWELLTOWN | 38336 | FRUITVALE |
| 37011 | ANTIOCH | 38548 | BUFFALO VALLEY | 37314 | COCKER CREEK | 38559 | DOYLE | 38337 | GADSDEN |
| 37013 | ANTIOCH | 38548 | BULLOCK VLY | 37314 | COCKERCREEK | 38225 | DRESDEN | 38562 | GAINESBORO |
| 37302 | APISON | 38136 | BULK MAIL CENTER | 37363 | COLLEGE DALE | 38023 | DRUMMONDS | 37066 | GALLATIN |
| 37669 | ARCATA GRAPHICS DISTRIBUTION | 37711 | BULLS GAP | 37046 | COLLEGE GROVE | 38454 | DUCK RIVER | 38036 | GALLAWAY |
| 38449 | ARDMORE | 37028 | BUMPUS MILLS | 37315 | COLLEGE DALE | 37326 | DUCKTOWN | 37095 | GASSAWAY |
| 38453 | ARDMORE | 38055 | BUREAU OF NAVAL PERSONNEL | 38017 | COLLIERVILLE | 37729 | DUFF | 38037 | GATES |
| 38002 | ARLINGTON | 38015 | BURLISON | 38027 | COLLIERVILLE | 38226 | DUKEDOM | 37738 | GATLINBURG |
| 37389 | ARNOLD A F B | 37029 | BURNS | 38450 | COLLINWOOD | 37327 | DUNLAP | 37336 | GEORGETOWN |
| 37389 | ARNOLD AIR FORCE BASE | 37872 | BURRVILLE | 37663 | COLONIAL HEIGHTS | 38330 | DYER | 38138 | GERMANTOWN |
| 37014 | ARRINGTON | 37640 | BUTLER | 38401 | COLUMBIA | 38024 | DYERSBURG | 38139 | GERMANTOWN |
| 37707 | ARTHUR | 37713 | BYBEE | 38402 | COLUMBIA | 38025 | DYERSBURG | 38183 | GERMANTOWN |
| 37015 | ASHLAND CITY | 38549 | BYRDSTOWN | 38223 | COMO | 38028 | EADS | 38338 | GIBSON |
| 37303 | ATHENS | 37309 | CALHOUN | 37316 | CONASAUGA | 37730 | EAGAN | 38015 | GILT EDGE |
| 37371 | ATHENS | 38320 | CAMDEN | 37922 | CONCORD | 37060 | EAGLEVILLE | 37071 | GLADEVILLE |
| 38004 | ATOKA | 38550 | CAMPAIGN | 37934 | CONCORD | 38053 | EAST ACRES | 38229 | GLEASON |
| 38220 | ATWOOD | 37030 | CARTHAGE | 37922 | CONCORD FARRAGUT | 37412 | EAST RIDGE | 37852 | GLEN MARY |
| 37016 | AUBURNTOWN | 37714 | CARYVILLE | 37933 | CONCORD FARRAGUT | 37614 | EAST TN STATE UNIV | 37070 | GOODLETTSVILLE |
| 37044 | AUSTIN PEAY ST UNIVERSITY | 37031 | CASTALIAN SPRG | 37934 | CONCORD FARRAGUT | 38331 | EATON | 37072 | GOODLETTSVILLE |
| 37743 | BAILEYTON | 37031 | CASTALIAN SPRINGS | 38501 | COOKEVILLE | 37731 | EIDSON | 38460 | GOODSPRING |
| 37745 | BAILEYTON | 37031 | CASTALIN SPGS | 38502 | COOKEVILLE | 37732 | ELGIN | 38563 | GOODSONVILLE |
| 37304 | BAKEWELL | 38321 | CEDAR GROVE | 38503 | COOKEVILLE | 37733 | ELGIN | 38039 | GRAND JCT |
| 37373 | BAKEWELL | 37032 | CEDAR HILL | 38505 | COOKEVILLE | 37643 | ELIZABETHTON | 38039 | GRAND JUNCTION |
| 37890 | BANEERRY | 38551 | CEJUNA | 38506 | COOKEVILLE | 37644 | ELIZABETHTON | 37337 | GRAND VIEW |
| 37236 | BAPTIST HOSPITAL | 37033 | CENTERVILLE | 37317 | COPPERHILL | 38455 | ELKTON | 37337 | GRANDVIEW |
| 38053 | BARRETVILLE | 37034 | CHAPEL HILL | 38016 | CORDOVA | 38029 | ELLEDALE | 38564 | GRANVILLE |
| 38133 | BARTLETT | 37035 | CHAPMANSBORO | 38018 | CORDOVA | 38560 | ELMWOOD | 37615 | GRAY |
| 38134 | BARTLETT | 37310 | CHARLESTON | 38088 | CORDOVA | 37328 | ELORA | 37338 | GRAYSVILLE |
| 38135 | BARTLETT | 37036 | CHARLOTTE | 37047 | CORNERSVILLE | 37748 | EMORY GAP | 37742 | GREENBACK |
| 38184 | BARTLETT | 37401 | CHATTANOOGA | 37721 | CORRYTON | 37329 | ENGLEWOOD | 37073 | GREENBRIER |
| 38311 | BATH SPRINGS | 37402 | CHATTANOOGA | 37722 | COSSY | 38332 | ENVILLE | 37743 | GREENEVILLE |
| 38544 | BAXTER | 37403 | CHATTANOOGA | 38224 | COTTAGE GROVE | 37061 | ERIN | 37744 | GREENEVILLE |
| 37708 | BEAN STATION | 37404 | CHATTANOOGA | 37048 | COTTONTOWN | 37650 | ERWIN | 37745 | GREENEVILLE |
| 38313 | BEECH BLUFF | 37405 | CHATTANOOGA | 38326 | COUNCE | 38061 | ESSARY SPRINGS | 38230 | GREENFIELD |
| 37018 | BEECHGROVE | 37406 | CHATTANOOGA | 38019 | COVINGTON | 37330 | ESTILL SPGS | 38565 | GRIMSLEY |
| 37305 | BEERSHBA SPGS | 37407 | CHATTANOOGA | 37318 | COWAN | 37330 | ESTILL SPRINGS | 37033 | GRINDERS |
| 37305 | BEERSHEBA SPRINGS | 37408 | CHATTANOOGA | 37723 | CRAB ORCHARD | 38456 | ETHRIDGE | 37339 | GRUETLI |
| 37019 | BELFAST | 37409 | CHATTANOOGA | 38554 | CRAWFORD | 37331 | ETOWAH | 37339 | GRUETLI LAAGER |
| 37020 | BELL BUCKLE | 37410 | CHATTANOOGA | 38142 | CREDIT CARD SERVICE CENTER | 37614 | ETSU | 37340 | GUILD |
| 37221 | BELLEVUE | 37411 | CHATTANOOGA | 38021 | CROCKETT MILLS | 38333 | EVA | 38339 | GUYS |
| 38006 | BELLS | 37412 | CHATTANOOGA | 37049 | CROSS PLAINS | 37332 | EVANSVILLE | 38040 | HALLS |
| 37306 | BELVIDERE | 37414 | CHATTANOOGA | 38004 | CROSSTOWN | 37033 | FAIRFIELD | 38461 | HAMPSHIRE |
| 38314 | BEMIS | 37415 | CHATTANOOGA | 38555 | CROSSVILLE | 38555 | FAIRFIELD | 37658 | HAMPTON |
| 37307 | BENTON | 37416 | CHATTANOOGA | 38557 | CROSSVILLE | 38558 | FAIRFIELD | 37878 | HAPPY VALLEY |
| 38315 | BETHEL SPGS | 37419 | CHATTANOOGA | 38558 | CROSSVILLE | 38555 | FAIRFIELD GLADE | 37748 | HARRIMAN |
| 38315 | BETHEL SPRINGS | 37421 | CHATTANOOGA | 38571 | CROSSVILLE | 38558 | FAIRFIELD GLADE | 37341 | HARRISON |
| 37046 | BETHESDA | 37422 | CHATTANOOGA | 38572 | CROSSVILLE | 37062 | FAIRVIEW | 37707 | HARROGATE |
| 37022 | BETHPAGE | 37424 | CHATTANOOGA | 38327 | CRUMP | 37656 | FALL BRANCH | 37752 | HARROGATE |
| 37023 | BIG ROCK | 37450 | CHATTANOOGA | 38053 | CUBA | 37333 | FARNER | 37753 | HARTFORD |
| 38221 | BIG SANDY | 38552 | CHESTNUT MOUND | 38451 | CULLEOKA | 37922 | FARRAGUT | 37074 | HARTSVILLE |
| 37308 | BIRCHWOOD | 38393 | CHEWALLA | 37050 | CUMBERLAND CITY | 37933 | FARRAGUT | 37754 | HEISKELL |
| 37709 | BLAINE | 37424 | CHICKAMAUGA | 37051 | CUMBERLAND FURNACE | 37934 | FARRAGUT | 37755 | HELENWOOD |
| 38545 | BLMINGTON SPGS | 37037 | CHRISTIANA | 37724 | CUMBERLAND GAP | 37334 | FAYETTEVILLE | 38340 | HENDERSON |
| 37660 | BLOOMINGDALE | 37641 | CHUCKEY | 37052 | CUNNINGHAM | 38194 | FEDERAL EXPRESS | 37075 | HENDERSOINVILLE |
| 38545 | BLOOMINGTON SPRINGS | 37641 | CHUCKY | 38452 | CYPRESS INN | 38334 | FINGER | 37077 | HENDERSOINVILLE |
| 37617 | BLOUNTVILLE | 37642 | CHURCH HILL | 37725 | DANDRIDGE | 38030 | FINLEY | 37075 | HENDERSOINVILLE |
| 37618 | BLUFF CITY | 37645 | CHURCH HILL | 38328 | DARDEN | 38148 | FIRST NATIONAL BANK | 37077 | HENDERSOINVILLE |
| 38007 | BOGOTA | 37715 | CLAIRFIELD | 37321 | DAYTON | 38017 | FISHERVILLE | 38041 | HENNING |
| | | 38553 | CLARKRANCE | 37322 | DECATUR | 38027 | FISHERVILLE | 38231 | HENRY |

YOUR DEDICATED CONNECTION

TENNESSEE ZIP CODES

| | | | | | | | | | |
|-------|---------------------------|---------|-----------------------|-------|------------------------|-------|------------------------------|-------|---------------------------|
| 37076 | HERMITAGE | 37917 | KNOXVILLE | 37352 | LYNCHBURG | 38148 | MEMPHIS | 38058 | MUNFORD |
| 38567 | HICKMAN | 37918 | KNOXVILLE | 38472 | LYNNVILLE | 38150 | MEMPHIS | 37127 | MURFREESBORO |
| 38115 | HICKORY HILL | 37919 | KNOXVILLE | 38048 | MACON | 38151 | MEMPHIS | 37128 | MURFREESBORO |
| 38125 | HICKORY HILL | 37920 | KNOXVILLE | 37115 | MADISON | 38152 | MEMPHIS | 37129 | MURFREESBORO |
| 37043 | HICKORY POINT | 37921 | KNOXVILLE | 37116 | MADISON | 38157 | MEMPHIS | 37130 | MURFREESBORO |
| 38042 | HICKORY VALLEY | 37922 | KNOXVILLE | 37354 | MADISONVILLE | 38159 | MEMPHIS | 37131 | MURFREESBORO |
| 38568 | HILHAM | 37923 | KNOXVILLE | 37349 | MANCHESTER | 38161 | MEMPHIS | 37132 | MURFREESBORO |
| 37043 | HILDALE | 37924 | KNOXVILLE | 37355 | MANCHESTER | 38163 | MEMPHIS | 37133 | MURFREESBORO |
| 37342 | HILLSBORO | 37927 | KNOXVILLE | 38236 | MANSFIELD | 38165 | MEMPHIS | 37201 | NASHVILLE |
| 37343 | HIXSON | 37928 | KNOXVILLE | 38237 | MARTIN | 38166 | MEMPHIS | 37202 | NASHVILLE |
| 38462 | HOHENWALD | 37929 | KNOXVILLE | 38238 | MARTIN | 38167 | MEMPHIS | 37203 | NASHVILLE |
| 38341 | HOLLADAY | 37930 | KNOXVILLE | 37801 | MARYVILLE | 38168 | MEMPHIS | 37204 | NASHVILLE |
| 38342 | HOLLOW ROCK | 37931 | KNOXVILLE | 37802 | MARYVILLE | 38173 | MEMPHIS | 37205 | NASHVILLE |
| 37699 | HOME SHOPPING NETWORK | 37932 | KNOXVILLE | 37803 | MARYVILLE | 38174 | MEMPHIS | 37206 | NASHVILLE |
| 38232 | HORNBEAK | 37933 | KNOXVILLE | 37804 | MARYVILLE | 38175 | MEMPHIS | 37207 | NASHVILLE |
| 38044 | HORNSBY | 37934 | KNOXVILLE | 37806 | MASCOT | 38177 | MEMPHIS | 37208 | NASHVILLE |
| 38343 | HUMBOLDT | 37938 | KNOXVILLE | 38049 | MASON | 38181 | MEMPHIS | 37209 | NASHVILLE |
| 38344 | HUNTINGDON | 37939 | KNOXVILLE | 38068 | MASON | 38182 | MEMPHIS | 37210 | NASHVILLE |
| 37345 | HUNTLAND | 37940 | KNOXVILLE | 38233 | MASONHALL | 38183 | MEMPHIS | 37211 | NASHVILLE |
| 37756 | HUNTSVILLE | 37950 | KNOXVILLE | 38050 | MAURY CITY | 38184 | MEMPHIS | 37212 | NASHVILLE |
| 38345 | HURON | 37990 | KNOXVILLE | 37807 | MAYNARDVILLE | 38186 | MEMPHIS | 37213 | NASHVILLE |
| 37078 | HURRICANE MILLS | 37995 | KNOXVILLE | 37030 | MC CLURES BEND | 38187 | MEMPHIS | 37214 | NASHVILLE |
| 37078 | HURRICANE MILLS | 37996 | KNOXVILLE | 37353 | MC DONALD | 38188 | MEMPHIS | 37215 | NASHVILLE |
| 37501 | I R S | 37997 | KNOXVILLE | 37101 | MC EWEN | 38190 | MEMPHIS | 37216 | NASHVILLE |
| 37544 | I R S | 37998 | KNOXVILLE | 38201 | MC KENZIE | 38193 | MEMPHIS | 37217 | NASHVILLE |
| 38110 | I R S | 37764 | KODAK | 38235 | MC LEMORESVILLE | 38194 | MEMPHIS | 37218 | NASHVILLE |
| 38346 | IDLEWILD | 37765 | KYLES FORD | 38235 | MC LEMORESVLE | 38197 | MEMPHIS | 37219 | NASHVILLE |
| 37079 | INDIAN MOUND | 37083 | LA FAYETTE | 37110 | MC MINNVILLE | 38145 | MEMPHIS LIGHT GAS AND | 37220 | NASHVILLE |
| 37089 | INGRAM DISTRIBUTION GROUP | 37729 | LA FOLLETTE | 37111 | MC MINNVILLE | | WATER | 37221 | NASHVILLE |
| 38197 | INTERNATIONAL PAPER CO | 37766 | LA FOLLETTE | 37101 | MC EWEN | 38165 | MEMPHIS RCSC | 37222 | NASHVILLE |
| 38463 | IRON CITY | 38046 | LA GRANGE | 37777 | MC GHEE TYSON ANG BASE | 38392 | MERCER | 37224 | NASHVILLE |
| 38347 | JACKS CREEK | 37086 | LA VERGNE | 38235 | MCLEMORESVILLE | 38357 | MICHIE | 37227 | NASHVILLE |
| 37757 | JACKSBORO | 37089 | LA VERGNE | 38355 | MEDINA | 37132 | MIDDLE TENN STATE UNIVERSITY | 37228 | NASHVILLE |
| 38301 | JACKSON | 37339 | LAAGER | 38356 | MEDON | 38052 | MIDDLETON | 37229 | NASHVILLE |
| 38302 | JACKSON | 38045 | LACONIA | 37204 | MELROSE | 37748 | MIDTOWN | 37230 | NASHVILLE |
| 38303 | JACKSON | 37083 | LAFAYETTE | 37202 | MELROSE | 37809 | MIDWAY | 37232 | NASHVILLE |
| 38305 | JACKSON | 37766 | LA FOLLETTE | 37501 | MEMPHIS | 38358 | MILAN | 37234 | NASHVILLE |
| 38308 | JACKSON | 37769 | LAKE CITY | 37544 | MEMPHIS | 38358 | MILAN ARMY AMMUNITION | 37235 | NASHVILLE |
| 38314 | JACKSON | 38002 | LAKELAND | 38101 | MEMPHIS | 38359 | PLANT | 37236 | NASHVILLE |
| 38556 | JAMESTOWN | 37379 | LAKESITE | 38103 | MEMPHIS | 38359 | MILLEDGEVILLE | 37237 | NASHVILLE |
| 37347 | JASPER | 38569 | LANCASTER | 38104 | MEMPHIS | 37072 | MILLERSVILLE | 37238 | NASHVILLE |
| 37760 | JEFFERSON CITY | 37770 | LANCING | 38105 | MEMPHIS | 37682 | MILLIGAN | 37240 | NASHVILLE |
| 37760 | JEFFERSON CTY | 37085 | LASCASSAS | 38106 | MEMPHIS | 37682 | MILLIGAN COLL | 37241 | NASHVILLE |
| 37762 | JELICO | 37680 | LAUREL BLOOMERY | 38107 | MEMPHIS | 37682 | MILLIGAN COLLEGE | 37242 | NASHVILLE |
| 37216 | JERE BAXTER | 38348 | LAVINIA | 38108 | MEMPHIS | 38083 | MILLINGTON | 37243 | NASHVILLE |
| 37080 | JOELTON | 38464 | LAWRENCEBURG | 38109 | MEMPHIS | 38053 | MILLINGTON | 37244 | NASHVILLE |
| 37601 | JOHNSON CITY | 38375 | LAWTON | 38110 | MEMPHIS | 38054 | MILLINGTON | 37245 | NASHVILLE |
| 37602 | JOHNSON CITY | 38344 | LEACH | 38111 | MEMPHIS | 38055 | MILLINGTON | 37246 | NASHVILLE |
| 37604 | JOHNSON CITY | 37087 | LEBANON | 38112 | MEMPHIS | 38083 | MILLINGTON | 37247 | NASHVILLE |
| 37605 | JOHNSON CITY | 37088 | LEBANON | 38113 | MEMPHIS | 37118 | MILTON | 37248 | NASHVILLE |
| 37614 | JOHNSON CITY | 37090 | LEBANON | 38114 | MEMPHIS | 38473 | MINOR HILL | 37249 | NASHVILLE |
| 37615 | JOHNSON CITY | 37771 | LENOIR CITY | 38115 | MEMPHIS | 38080 | MISTON | 37250 | NASHVILLE |
| 37659 | JONESBORO | 37772 | LENOIR CITY | 38116 | MEMPHIS | 37119 | MITCHELLVILLE | 37246 | NASHVILLE ELEC SERV |
| 37659 | JONESBOROUGH | 38047 | LENOX | 38117 | MEMPHIS | 37810 | MOHAWK | 37250 | NATIONAL LIFE CENTER |
| 37921 | KARNS | 38468 | LEOMA | 38118 | MEMPHIS | 38573 | MONROE | 38188 | NATL CUSTOMER SUPPORT CTR |
| 37348 | KELSO | 37091 | LEWISBURG | 38119 | MEMPHIS | 37356 | MONTEAGLE | 38054 | NAVAL HOSPITAL |
| 38233 | KENTON | 38351 | LEXINGTON | 38120 | MEMPHIS | 38574 | MONTEREY | 37134 | NEW JOHNSONVILLE |
| 38053 | KERRVILLE | 37095 | LIBERTY | 38122 | MEMPHIS | 37811 | MOORESBURG | 37820 | NEW MARKET |
| 37347 | KIMBALL | 37234 | LIFEWAY CHRISTIAN RE- | 38124 | MEMPHIS | 37766 | MORLEY | 38563 | NEW MIDDLETON |
| 37920 | KIMBERLIN HEIGHTS | SOURCES | | 38125 | MEMPHIS | 38361 | MORRIS CHAPEL | 37755 | NEW RIVER |
| 38462 | KIMMINS | 37681 | LIMESTONE | 38126 | MEMPHIS | 37357 | MORRISON | 37824 | NEW TAZEWELL |
| 37064 | KINGFIELD | 37096 | LINDEN | 38127 | MEMPHIS | 37813 | MORRISTOWN | 37825 | NEW TAZEWELL |
| 37660 | KINGSPORT | 38570 | LIVINGSTON | 38128 | MEMPHIS | 37814 | MORRISTOWN | 38059 | NEWBERN |
| 37662 | KINGSPORT | 37097 | LOBELVILLE | 38130 | MEMPHIS | 37815 | MORRISTOWN | 37819 | NEWCOMB |
| 37663 | KINGSPORT | 38053 | LOCKE | 38131 | MEMPHIS | 37816 | MORRISTOWN | 37821 | NEWPORT |
| 37664 | KINGSPORT | 37773 | LONE MOUNTAIN | 38132 | MEMPHIS | 38057 | MOSCOW | 37822 | NEWPORT |
| 37665 | KINGSPORT | 37350 | LOOKOUT MOUNTAIN | 38133 | MEMPHIS | 38076 | MOSCOW | 37826 | NIOTA |
| 37669 | KINGSPORT | 38469 | LORETTO | 38134 | MEMPHIS | 37818 | MOSHEIM | 37135 | NOLENSVILLE |
| 37763 | KINGSTON | 37774 | LOUDON | 38135 | MEMPHIS | 38575 | MOSS | 37136 | NORENE |
| 37082 | KINGSTON SPRINGS | 37777 | LOUISVILLE | 38136 | MEMPHIS | 37645 | MOUNT CARMEL | 37756 | NORMA |
| 37901 | KNOXVILLE | 37778 | LOWLAND | 38137 | MEMPHIS | 37121 | MOUNT JULIET | 37360 | NORMANDY |
| 37902 | KNOXVILLE | 38053 | LUCY | 38138 | MEMPHIS | 37122 | MOUNT JULIET | 37828 | NORRIS |
| 37909 | KNOXVILLE | 37351 | LUPTON CITY | 38139 | MEMPHIS | 38474 | MOUNT PLEASANT | 37207 | NORTHEAST |
| 37912 | KNOXVILLE | 38352 | LURAY | 38141 | MEMPHIS | 37683 | MOUNTAIN CITY | 37137 | NUNNELLY |
| 37914 | KNOXVILLE | 37779 | LUTTRELL | 38142 | MEMPHIS | 37684 | MOUNTAIN HOME | 37830 | OAK RIDGE |
| 37915 | KNOXVILLE | 38471 | LUTTS | 38145 | MEMPHIS | 37684 | MTN HOME | 37831 | OAK RIDGE |
| 37916 | KNOXVILLE | 37098 | LYLES | 38147 | MEMPHIS | 37359 | MULBERRY | 37829 | OAKDALE |

UNITED COMMUNICATIONS : 2015 DIRECTORY

TENNESSEE ZIP CODES

| | | | | | | | | | |
|-------|--------------------|-------|------------------------|-------|--------------------------|-------|-------------------------------|-------|-----------------------------|
| 38362 | OAKFIELD | 38476 | PRIMM SPRINGS | 38375 | SELWER | 37871 | STRAWBERRY PLAINS | 37180 | UNIONVILLE |
| 38060 | OAKLAND | 38477 | PROSPECT | 37374 | SEQUATCHIE | 38380 | SUGAR TREE | 38152 | UNIVERSITY OF MEMPHIS |
| 38076 | OAKLAND | 37851 | PRUDEN | 37862 | SEVIERVILLE | 38483 | SUMMERTOWN | 37996 | UNIVERSITY OF TENN |
| 38240 | OBION | 38478 | PULASKI | 37863 | SEVIERVILLE | 37382 | SUMMITVILLE | 37383 | UNIVERSITY OF THE SOUTH |
| 37361 | OCOEE | 38251 | PURYEAR | 37864 | SEVIERVILLE | 37872 | SUNBRIGHT | 38163 | UNIVERSITY OF TN |
| 37138 | OLD HICKORY | 38579 | QUEBECK | 37868 | SEVIERVILLE | 38150 | SUNTRUST BANK | 38238 | UNIVERSITY OF TN |
| 37362 | OLDFORT | 38053 | QUITO | 37876 | SEVIERVILLE | 37873 | SURGOINSVILLE | 37232 | VANDERBILT HOSPITAL |
| 38475 | OLIVEHILL | 38367 | RAMER | 37375 | SEWANE | 37874 | SWEETWATER | 37240 | VANDERBILT UNIVERSITY |
| 37840 | OLIVER SPRINGS | 38015 | RANDOLPH | 37383 | SEWANE | 38488 | TAFT | 37235 | VANDERBILT UNIVERSITY STA B |
| 37841 | ONEIDA | 38583 | RAVENS CROFT | 37865 | SEYMOUR | 37877 | TALBOTT | 37181 | VANLEER |
| 37140 | ONLY | 37149 | READYVILLE | 37688 | SHADY VALLEY | 37878 | TALLASSEE | 37394 | VIOLA |
| 37363 | OOLTEWAH | 38368 | REAGAN | 38255 | SHARON | 37708 | TATE SPRINGS | 37885 | VONORE |
| 37141 | ORLINDA | 37415 | RED BANK | 38193 | SHARP ELECTRONIC MANUFAC | 37879 | TAZEWELL | 37886 | WALLAND |
| 37854 | OZONE | 37150 | RED BOILING SPRINGS | 37866 | SHARPS CHAPEL | 37690 | TELFORD | 38587 | WALLING |
| 38577 | PALL MALL | 38161 | REG INSPECTION SERVICE | 37867 | SHAWANE | 37385 | TELLICO PLAINS | 37887 | WARTBURG |
| 37365 | PALMER | 37369 | RELJANCE | 37160 | SHELBYVILLE | 37880 | TEN MILE | 37183 | WARTRACE |
| 38241 | PALMERSVILLE | 37370 | RICEVILLE | 37161 | SHELBYVILLE | 37178 | TENNESSEE RIDGE | 37888 | WASHBURN |
| 37142 | PALMYRA | 38580 | RICKMAN | 37162 | SHELBYVILLE | 37990 | THE MAIL BOX | 37694 | WATAUGA |
| 38242 | PARIS | 37151 | RIDDLETON | 37376 | SHERWOOD | 37997 | THIRD NATIONAL BANK | 37184 | WATERTOWN |
| 38388 | PARKER CROSSROADS | 38080 | RIDGELEY | 38376 | SHILOH | 37179 | THOMPSONS STATION | 37381 | WATTS BAR DAM |
| 37843 | PARROTTSVILLE | 37152 | RIDGE TOP | 37033 | SHIPPS BEND | 37881 | THORN HILL | 37185 | WAVERLY |
| 38363 | PARSONS | 38063 | RIPLEY | 37377 | SIGNAL MOUNTAIN | 38343 | THREE WAY | 38485 | WAYNESBORO |
| 37143 | PEGRAM | 38583 | RIVERWATCH | 38377 | SILERTON | 38070 | TIGRETT | 37854 | WESTEL |
| 37366 | PELHAM | 38253 | RIVES | 38582 | SILVER POINT | 38071 | TIPTON | 37186 | WESTMORELAND |
| 37144 | PETERSBURG | 37687 | ROAN MOUNTAIN | 37165 | SLAYDEN | 38079 | TIPTONVILLE | 38486 | WESTPOINT |
| 37845 | PETROS | 37852 | ROBBINS | 37378 | SMART | 37245 | TN DEPT OF EMPLOYMENT SERVICE | 38387 | WESTPORT |
| 37064 | PEYTONSVILLE | 37022 | ROCK BRIDGE | 37166 | SMITHVILLE | 37243 | TN DEPT OF GENERAL SERVICE | 37187 | WHITE BLUFF |
| 37846 | PHILADELPHIA | 38581 | ROCK ISLAND | 37167 | SMYRNA | 37247 | TN DEPT OF HEALTH ENVIRON | 37188 | WHITE HOUSE |
| 38365 | PICKWICK DAM | 37853 | ROCKFORD | 37869 | SNEEDVILLE | 37247 | TN DEPT OF HUMAN SVC | 37890 | WHITE PINE |
| 37862 | PIGEON FORGE | 37153 | ROCKVALE | 37379 | SODDY DAISY | 37248 | TN DEPT OF REVENUE | 37189 | WHITES CREEK |
| 37863 | PIGEON FORGE | 37854 | ROCKWOOD | 37384 | SODDY DAISY | 37242 | TN DEPT OF SAFETY | 37891 | WHITESBURG |
| 37864 | PIGEON FORGE | 37857 | ROGERSVILLE | 37379 | SODDY-DAISY | 37249 | TN RIDGE | 37396 | WHITESIDE |
| 37868 | PIGEON FORGE | 38053 | ROSEMARK | 38060 | SOMERVILLE | 37178 | TOONE | 38075 | WHITEVILLE |
| 37876 | PIGEON FORGE | 38066 | ROSSVILLE | 38068 | SOMERVILLE | 38381 | TOWNSEND | 38588 | WHITLEYVILLE |
| 37367 | PIKEVILLE | 38076 | ROSSVILLE | 38075 | SOMERVILLE | 37882 | TRACY CITY | 37397 | WHITWELL |
| 37686 | PINEY FLATS | 37160 | ROYAL | 38257 | SOUTH FULTON | 37387 | TRADE | 38589 | WILDER |
| 37699 | PINEY FLATS | 37064 | RUDDERVILLE | 37380 | SOUTH PITTSBURG | 37691 | TREADWAY | 38388 | WILDERSVILLE |
| 38366 | PINSON | 37733 | RUGBY | 37171 | SOUTHSIDE | 37881 | TRENTON | 38053 | WILKINSVILLE |
| 37847 | PIONEER | 37860 | RUSSELLVILLE | 38583 | SPARTA | 38382 | TREZEVANT | 38487 | WILLIAMSPORT |
| 38017 | PIPERTON | 38369 | RUTHERFORD | 37870 | SPEEDWELL | 38258 | TRIMBLE | 38057 | WILLISTON |
| 38027 | PIPERTON | 37861 | RUTLEDGE | 38585 | SPENCER | 38259 | TRIUNE | 38066 | WILLISTON |
| 37929 | PLAZA TOWER | 37380 | S PITTSBURG | 37337 | SPRING CITY | 37014 | TROY | 38076 | WILLISTON |
| 38578 | PLEASANT HILL | 37375 | S SAINT ANDREWS | 37381 | SPRING CITY | 38260 | TULLAHOMA | 37398 | WINCHESTER |
| 37145 | PLEASANT SHADE | 38481 | SAINT JOSEPH | 38378 | SPRING CREEK | 37388 | TULLAHOMA | 37892 | WINFIELD |
| 37145 | PLEASANT SHDE | 37304 | SALE CREEK | 37174 | SPRING HILL | 37389 | TURTLETOWN | 37211 | WOODBINE |
| 37146 | PLEASANT VIEW | 37373 | SALE CREEK | 37172 | SPRINGFIELD | 37391 | TUSCULUM COLL | 37190 | WOODBURY |
| 37033 | PLEASANTVILLE | 38370 | SALTILLO | 38256 | SPRINGVILLE | 37743 | U S PENCIL COMPANY | 38271 | WOODLAND MILLS |
| 38151 | PLOUGH INC | 38254 | SAMBURG | 38481 | ST JOSEPH | 37161 | UNICOI | 37191 | WOODLAWN |
| 38061 | POCAHONTAS | 37042 | SANGO | 38069 | STANTON | 37692 | UNION CITY | 38053 | WOODSTOCK |
| 37148 | PORTLAND | 38482 | SANTA FE | 38379 | STANTONVILLE | 38261 | UNION CITY | 37098 | WRIGLEY |
| 37317 | POSTELLE | 38371 | SARDIS | 37131 | STATE FARM INS CO | 38281 | UNION CITY | 38077 | WYNNBURG |
| 37848 | POWDER SPRINGS | 38067 | SAULSBURY | 37620 | STEPHEN HOLSTON | 38159 | UNION PLANTERS NATL BX | 38389 | YORKVILLE |
| 37849 | POWELL | 38372 | SAVANNAH | 37175 | STEWART | 2121 | | 38390 | YUMA |
| 37397 | POWELLS CROSSROADS | 38374 | SCOTTS HILL | 37871 | STRAW PLAINS | 38147 | UNION PLANTERS NATL BX 387 | | |



Use Local ZIP Codes

They're right in your phone book!

Letters going across town need ZIP Codes as much as letters going across-country.