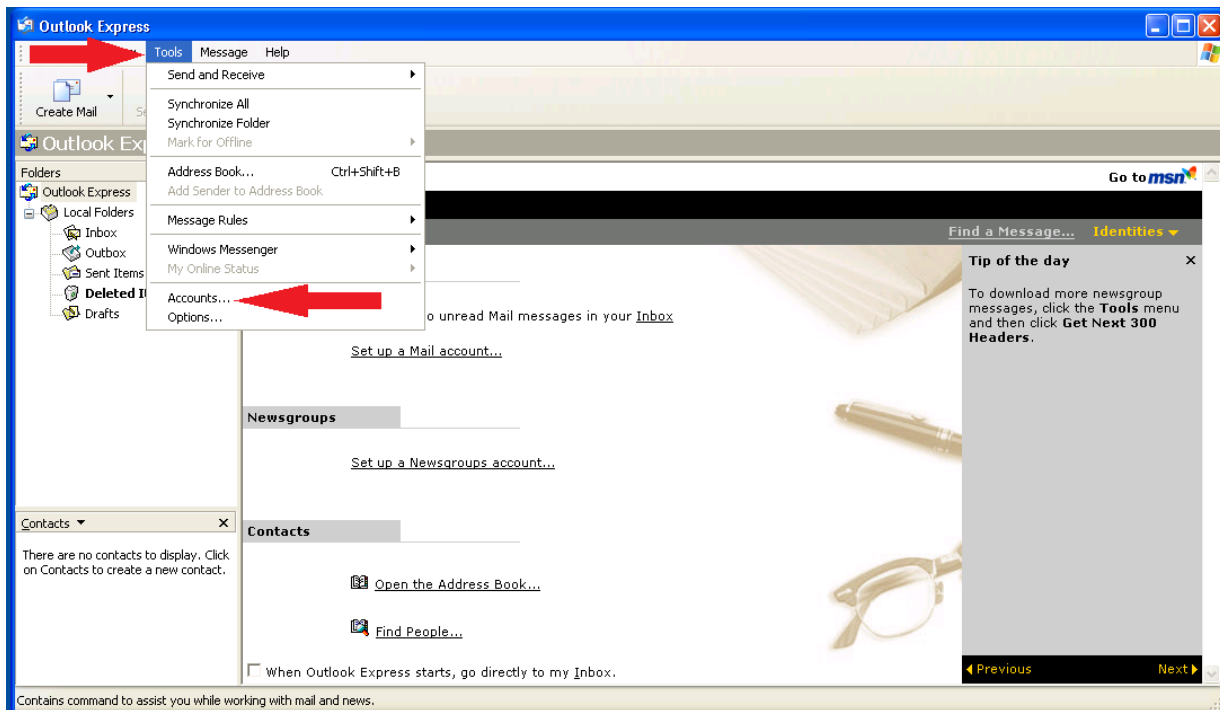


Changing Outgoing Ports



Outlook Express Mail Changing Outgoing Port Guide

- Mail Account settings can be located in Outlook Express by opening the **Tools** Menu and selecting **"Accounts."**



- To view or change your Mail Account settings select the account that needs to be edited under the **"Mail"** tab and click on the button labeled **"Properties"**

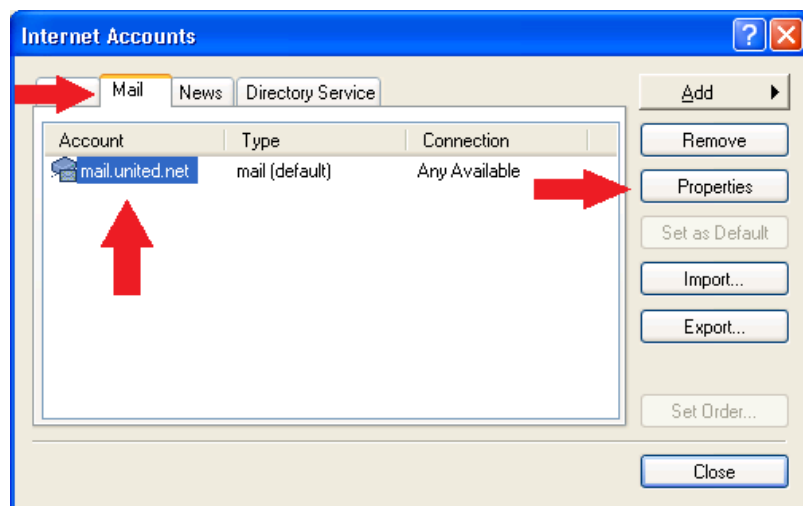
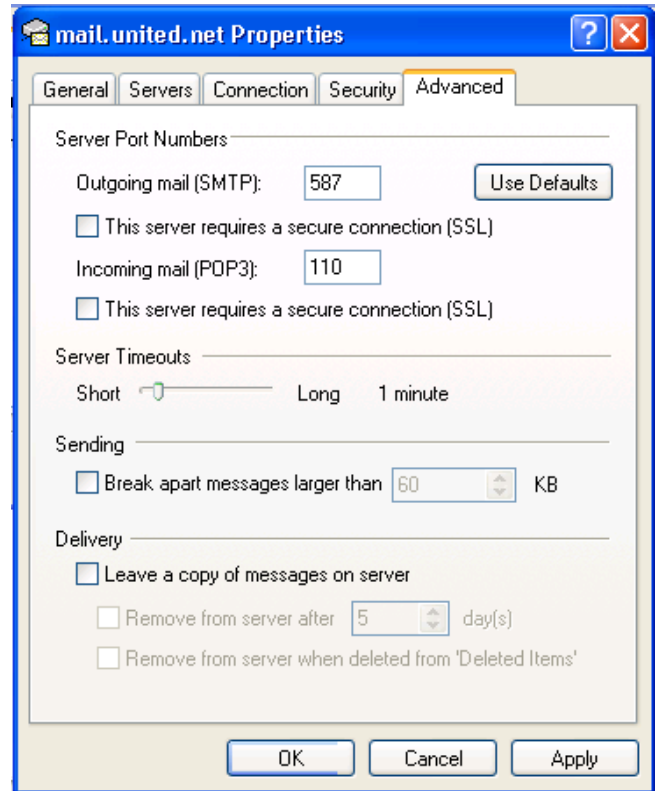
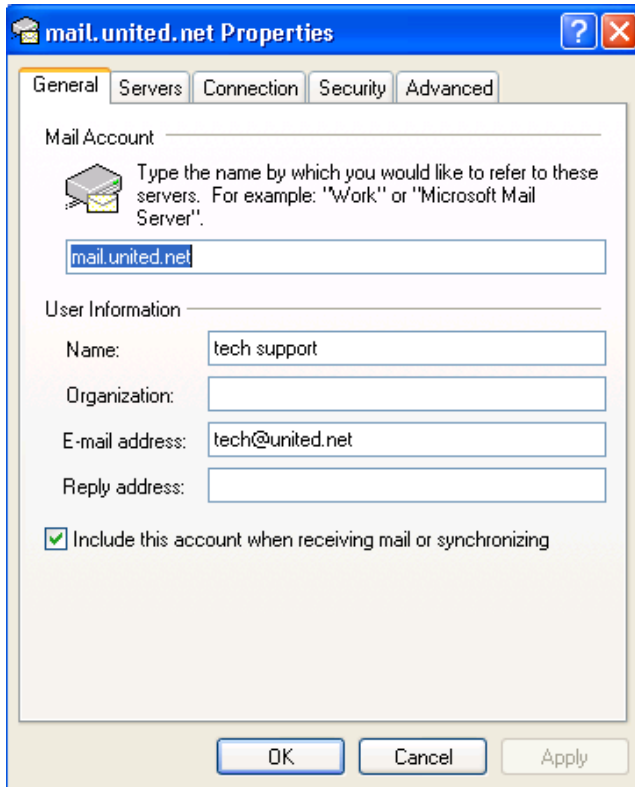


image shown on next page

- Next you should be on the **General** Properties tab. Select the **Advanced** tab on the far right.



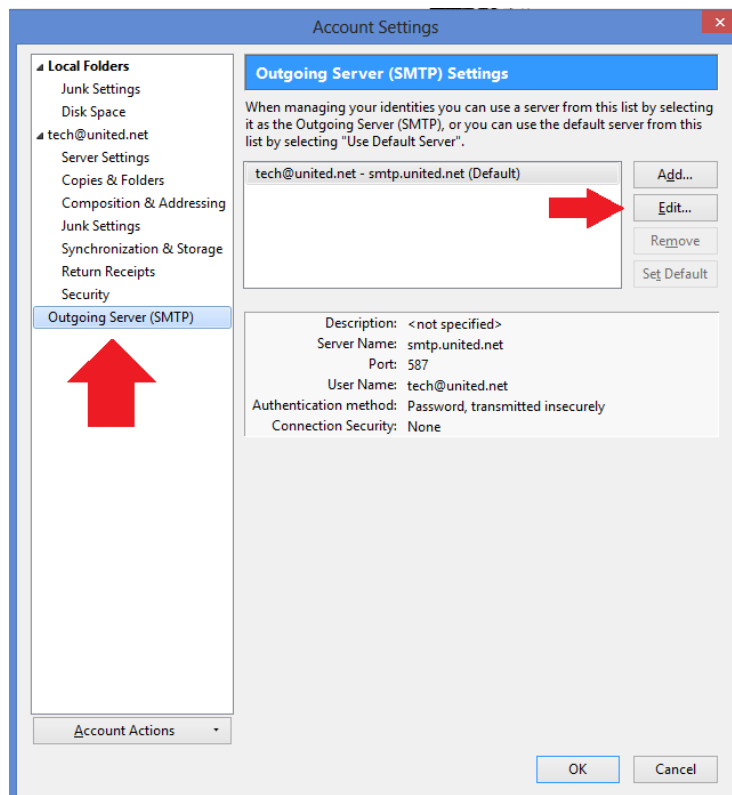
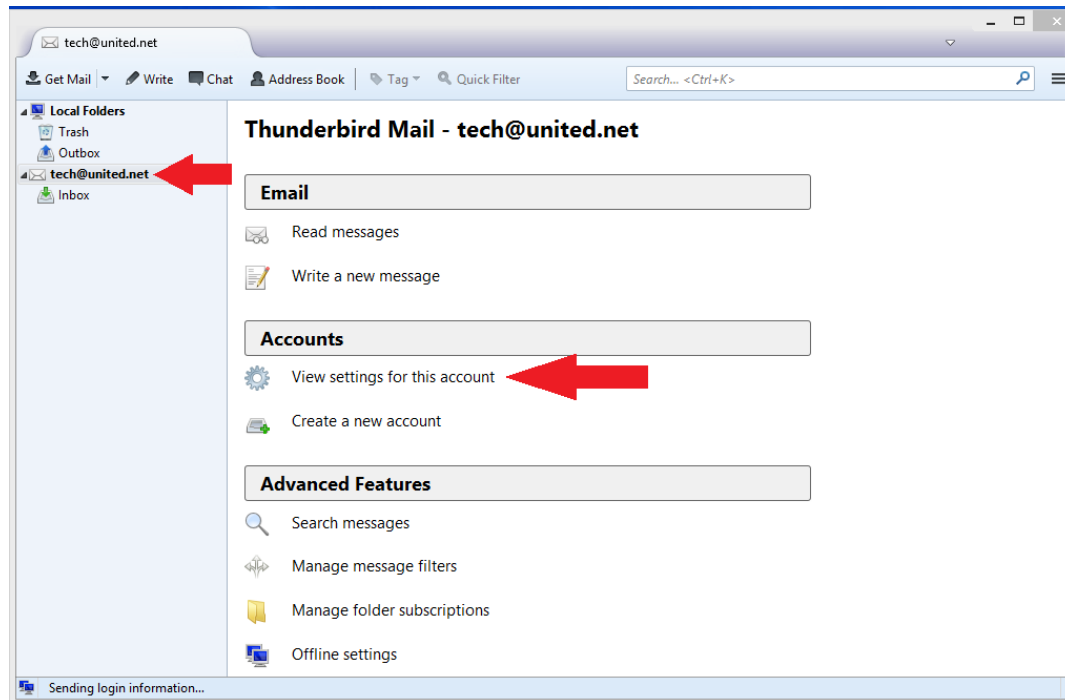
- Change Outgoing Port from 25 to 587

Note: Microsoft Outlook and Windows Mail all follow a similar layout for changing your Outgoing Mail Port

(Continued on Next Page)

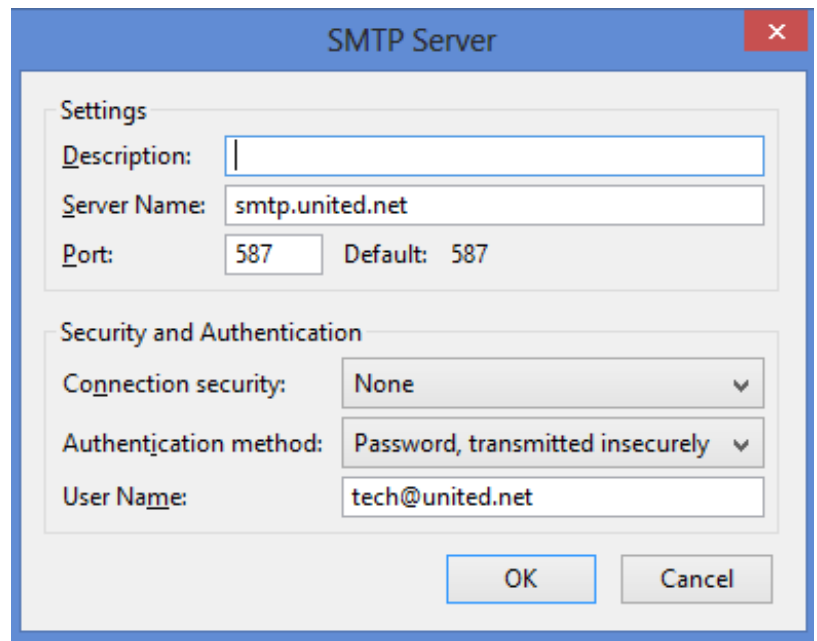
Mozilla Thunderbird Changing Outgoing Port Guide

- Left click the email address in the panel on the left.
- Select **“View settings for this account”**



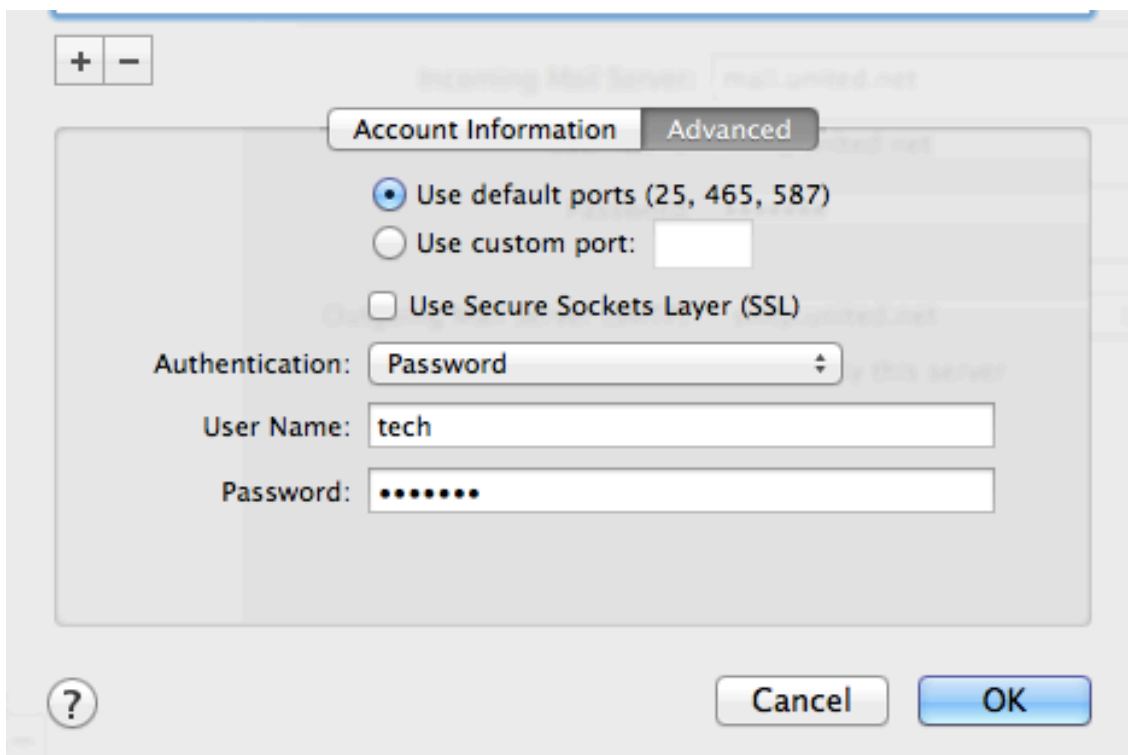
- Click Outgoing Server (SMTP) in the panel on the left.
- Select your United Communication's email account.
- Click Edit.

- Thunderbird uses port 587 as it's default SMTP Port which is the preferred port number.



Mac Mail Changing Outgoing Port Guide

There is no need to change your ports in Mac Mail. As shown in the image below Mac Mail uses ports 25, 465, and 587 by default.



After completing these steps you should be able to send and receive email through Outlook Express, even outside of United Communication's Network. If you can not send and receive email, contact United Communications Technical Support at 800-779-2227 Option 2 for further assistance.